

ClarkeTM



25" INDUSTRIAL FAN

Model No. CDF25P

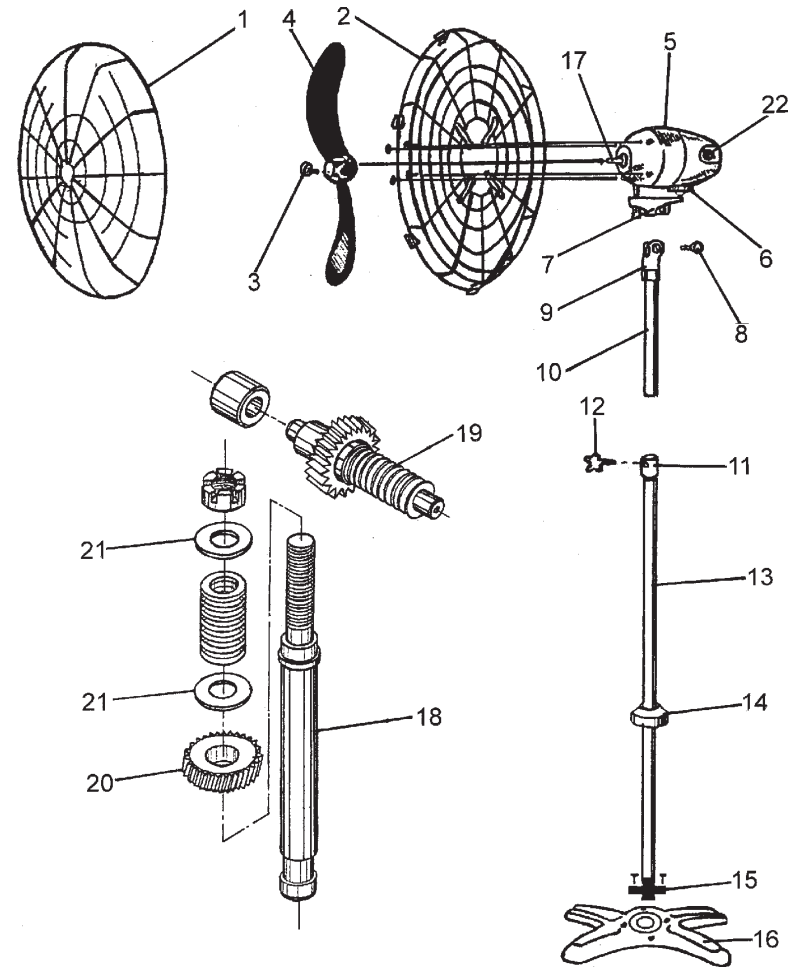
Part No. 3230220



OPERATING & MAINTENANCE INSTRUCTIONS



PARTS DIAGRAM



SPECIFICATIONS

Motor	230V 50Hz 1Ph
Power Rating	220 Watts
Max. Current	1.5 Amps
Fuse Rating	5 Amps
Height Max.	Approx.1,930mm
Height Min.	1,550mm
Air Flow	8,120 cf/m
Part No.	3230220

PARTS LIST

No.	Description	Qty	Part No.	No.	Description	Qty	Part No.
1	Front Guard	1	CDF2501	11	Coupling	1	CDF2511
2	Rear Guard	1	CDF2502	12	Plastic Knob	1	CDF2512
3	Blade Set Screw	1	CDF2503	13	Outer Tube	1	CDF2513
4	Blade	1	CDF2504	14	Cover Ring	1	CDF2514
5	Motor	1	CDF2505A	15	Cast Coupling	1	CDF2515
	Motor Housing	1	CDF2605B	16	Cast Iron Base	1	CDF2616
6	Swivel Bush	1	CDF2506	17	Shaft	1	CDF2517
7	Female Support	1	CDF2507	18	Vertical Spindle	1	CDF2518
8	Set Screw	1	CDF2508	19	Gear Shaft	1	CDF2519
9	Male Support	1	CDF2509	20	Spur Gear	1	CDF2520
10	Inner Tube	1	CDF2510	21	Washer	2	CDF2521

ClarkeTM

INTERNATIONAL

SPARE PARTS & SERVICING

Please contact your nearest dealer, or
CLARKE International, on one of the following numbers.

PARTS - 0181 558 6696 SERVICE - 0181 556 4443

PARTS & SERVICE FAX - 0181 558 3622

Please note that the details and specifications contained herein, are correct at the time of going to print. However, CLARKE International reserve the right to change specifications at any time without prior notice.

Thank you for purchasing this Clarke Industrial Pedestal Fan. Before attempting to operate the unit, please read this instruction manual, and follow all directions carefully. By doing so you will ensure its' safe operation, and look forward to long and trouble free service from your Fan.

GUARANTEE

This CLARKE product is guaranteed against faulty manufacture for a period of 12 months from the date of purchase. Please keep your receipt as proof of purchase. This guarantee is invalid if the product is found to have been abused or tampered with in any way, or not used for the purpose for which it was intended.

Faulty goods should be returned to their place of purchase, no product can be returned to us without prior permission. This guarantee does not effect your statutory rights.

SAFETY PRECAUTIONS

Before using your fan it is in your own interest to read and pay attention to the following safety rules:

1. Locate the fan on a level surface for stability, conveniently located to an electrical supply.
2. Position the fan out of reach of children.
3. Do not insert anything into the guard grill.
4. If moving the fan to a new location, First switch OFF and unplug from the mains supply.
5. Never lean across the fan as there is a danger of loose clothing or jewellery entering the guard and becoming tangled in the fan blade.

ELECTRICAL CONNECTIONS

Connect the mains lead to a standard, 230 Volt (50Hz) electrical supply through an approved 13 amp BS 1363 plug, or a suitably fused isolator switch.

⚠ WARNING! THIS APPLIANCE MUST BE EARTHED ⚠

IMPORTANT: The wires in the mains lead are coloured in accordance with the following code

Green & Yellow - Earth

Blue - Neutral

Brown - Live

As the colours of the flexible lead of this appliance may not correspond with the coloured markings identifying terminals in your plug proceed as follows:

Connect the GREEN & YELLOW cord to plug terminal marked with a letter "E" or Earth symbol "⚡" or coloured GREEN or GREEN & YELLOW.

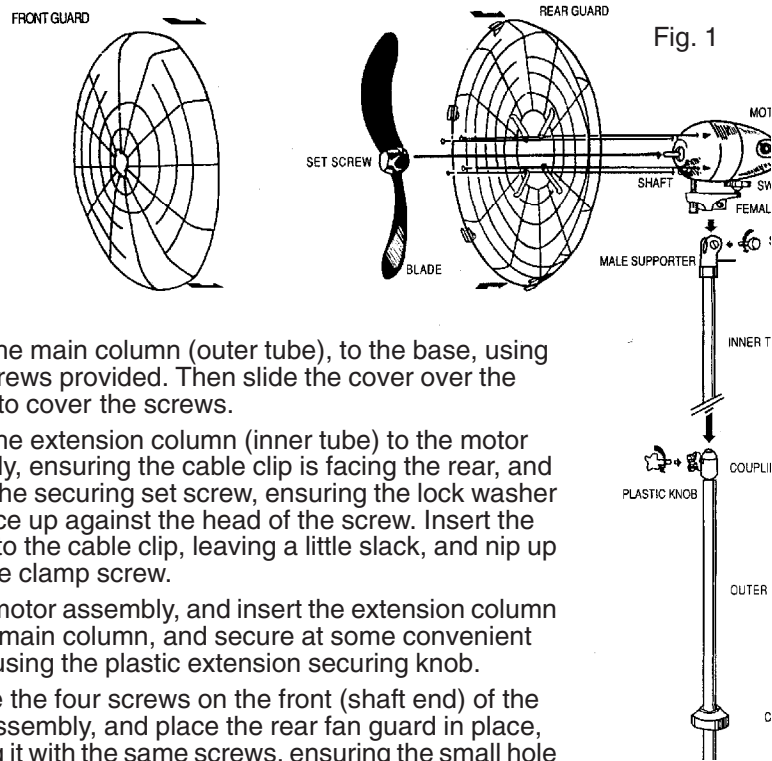
Connect the BROWN cord to plug terminal marked with a letter "L" or coloured RED.

Connect the BLUE cord to plug terminal marked with a letter "N" or coloured BLACK.

If this appliance is fitted with a plug which is moulded onto the electric cable (i.e. non-rewirable) please note:

1. The plug must be thrown away if it is cut from the electric cable. There is a danger of electric shock if it is subsequently inserted into a socket outlet.
2. Never use the plug without the fuse cover fitted.
3. Should you wish to replace a detachable fuse carrier, ensure that the correct replacement is used (as indicated by marking or colour code).
4. Replacement fuse covers are obtained from your local dealer or electrical stockists.
5. **The fuse in the plug must be replaced with one of the same rating (5 amps) and this replacement must be ASTA approved to BS1362.**

ASSEMBLY (Ref Fig.1)



1. Attach the main column (outer tube), to the base, using the 4 screws provided. Then slide the cover over the column to cover the screws.
2. Attach the extension column (inner tube) to the motor assembly, ensuring the cable clip is facing the rear, and tighten the securing set screw, ensuring the lock washer is in place up against the head of the screw. Insert the cable into the cable clip, leaving a little slack, and nip up the cable clamp screw.
3. Lift the motor assembly, and insert the extension column into the main column, and secure at some convenient height, using the plastic extension securing knob.
4. Remove the four screws on the front (shaft end) of the motor assembly, and place the rear fan guard in place, securing it with the same screws, ensuring the small hole in the guard rim is at 6 o'clock.
5. Attach the fan to the shaft, securing it firmly with the set screw provided in the side of the fan hub.
6. Hang the front fan cover on to the rear cover, and insert the screw through the holes at 6 o'clock in both guard rims, and tighten the nut.

NOTE: It is a requirement that this securing screw is fitted, permanently.

OPERATION

A. Fan Speed

The fan is provided with a 3 position switch for speed control, mounted on the rear of the motor housing.

B. Sweep

The degree of sweep may be adjusted by slackening off the securing screw, which secures the motor to the curved link, connecting the front motor pivot to the drive shaft at the rear of the motor.

Slacken off the securing screw by turning its' knurled knob, noting that as the screw is 'upside down', viewed from above, it must be screwed in a **clockwise direction to undo**. Do not remove the screw.

Pivot the motor assembly to a position to obtain the desired degree of sweep, and re-tighten the securing screw.

C. Tilt

Slacken off the set screw which secures the head to the column, and tilt the head to the desired angle, before tightening the set screw once again.

D. Raising and Lowering the Head

TAKING THE FULL WEIGHT OF THE HEAD, undo the Extension Securing knob at the coupling, and raise or lower the head as required. Re-tighten the adjuster knob

IMPORTANT

All adjustments should be carried out with the fan switched OFF, and the fan blade stationary

MAINTENANCE

1. Always disconnect the fan from the mains supply before attempting any cleaning operation.
2. The fan blade may be washed in warm water using a little mild detergent, or alternatively, it may be wiped with a damp cloth.
3. Remove the fan guards completely from the motor assembly before cleaning. This is to avoid the possibility of water entering the motor housing. The motor housing may be wiped with a damp cloth.
3. Ensure the unit is completely dry before re-assembling and connecting to the mains supply.

DO NOT IMMERSE IN WATER DO NOT USE HARSH ABRASIVE CLEANERS.