

## A SELECTION FROM THE VAST RANGE OF

# Clarke®

## QUALITY PRODUCTS

### AIR COMPRESSORS

From DIY to industrial. Plus air tools, spray guns and accessories.

### GENERATORS

Prime duty or emergency standby for business, home and leisure.

### POWER WASHERS

Hot and cold, electric and engine driven - we have what you need.

### WELDERS

Mig, Arc, Tig and Spot. From DIY to auto/industrial.

### METALWORKING

Drills, grinders and saws for DIY and professional use.

### WOODWORKING

Saws, sanders, lathes, mortisers and dust extraction.

### HYDRAULICS

Cranes, body repair kits, transmission jacks for all types of workshop use.

### WATER PUMPS

Submersible, electric and engine driven for DIY, agriculture and industry.

### POWER TOOLS

Angle grinders, cordless drill sets, saws and sanders.

### STARTER/CHARGERS

All sizes for car & commercial use.



## 20" INDUSTRIAL PEDESTAL FAN

MODEL No: CDF20HV-P

Part No: 3231505

**Clarke** INTERNATIONAL

For spare parts and servicing, please contact your nearest dealer, or Clarke International on

**020 - 8988 - 7400**

e-mail: [Parts@clarkeinternational.com](mailto:Parts@clarkeinternational.com) e-mail: [Service@clarkeinternational.com](mailto:Service@clarkeinternational.com)

**Hemnal Street, Epping, Essex CM16 4LG**

OPERATING & MAINTENANCE  
INSTRUCTIONS





**Please read these instructions carefully before operating the tool**

Thank you for purchasing this **CLARKE** 20" Industrial Pedestal Fan. Before using the device, please read this manual thoroughly and carefully follow instructions given. This is for your own safety and that of others around you, and is also to help you achieve long and trouble free service from your new fan.

### CLARKE GUARANTEE

This CLARKE product is guaranteed against faulty manufacture for a period of 12 months from the date of purchase. Please keep your receipt as proof of purchase.

This guarantee is invalid if the product is found to have been abused or tampered with in any way, or not used for the purpose for which it was intended.

Faulty goods should be returned to their place of purchase, no product can be returned to us without prior permission.

This guarantee does not affect your statutory rights.

**PARTS & SERVICE TEL: 020 8988 7400**

**or e-mail as follows:**

**PARTS: Parts@clarkeinternational.com**

**SERVICE: Service@clarkeinternational.com**



When disposing of this product, do not dispose of with general waste. It must be disposed of according to the laws governing Waste Electrical and Electronic equipment, at a recognised disposal facility.

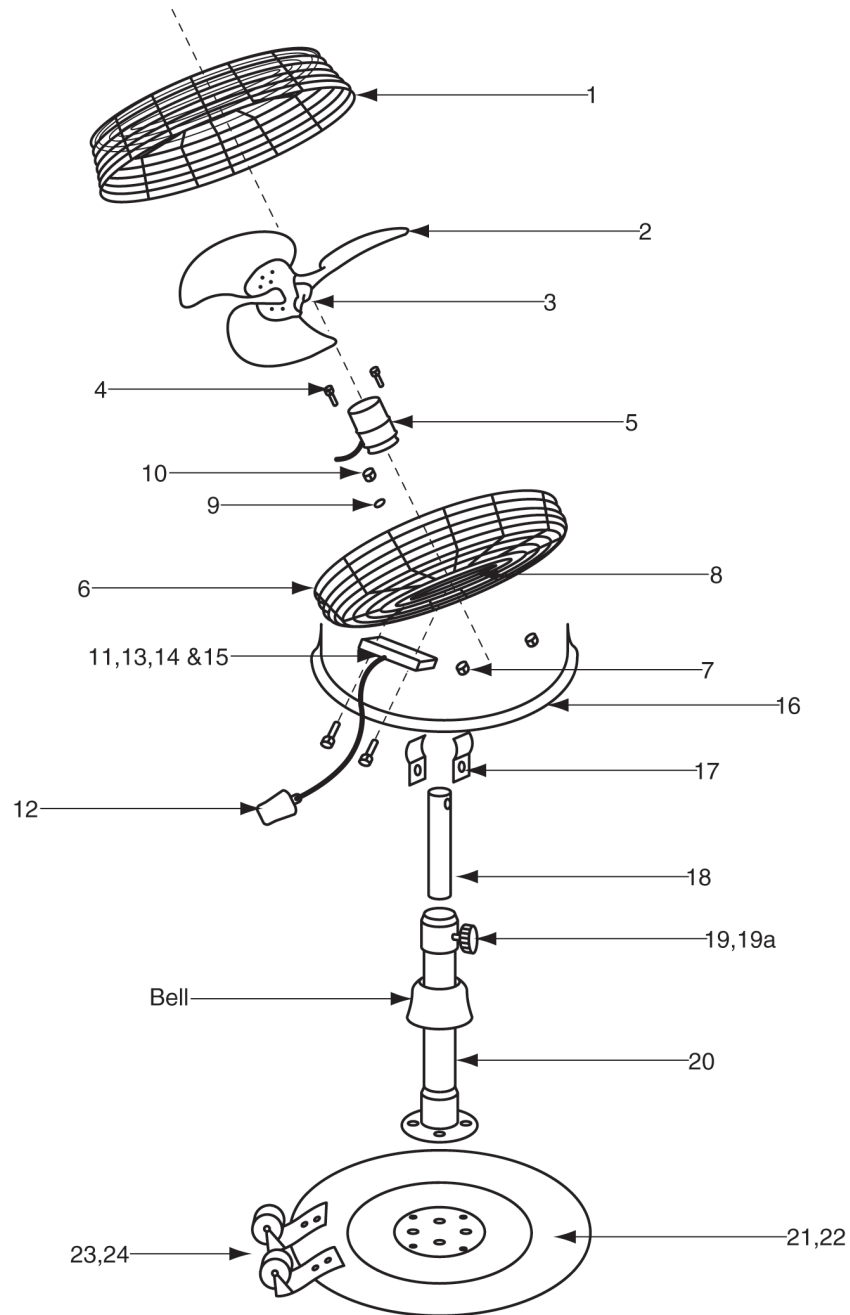
Please note that the details and specifications contained herein are correct at the time of going to print. However CLARKE International reserve the right to change specifications at any time without prior notice. Always consult the machines data plate

### Parts List

Item	Part Number	Description	Qty
1	OT20001	Front Grill	1
2	OT20002	Fan Blade	1
3	OT20003	Screw	1
4	OT20004	Screw	4
5	OT20005	Motor	1
6	OT20006	Rear Grill	1
7	OT20007	Nut	4
8	OT20008	Screw	2
9	OT20009	Rubber Spacer	2
10	OT20010	Lock Nut	2
11	OT20011	Knob	1
12	OT20012	Power Cord	1
13	OT20013	Switch Box	1
14	OT20014	Capacitor	1
15	OT20015	Switch	1
16	OT20016	Fan Holder	1
17	OT20017	Clip	2
18	OT20018	Inner Tube	1
19	OT20019	Connector	1
19a	OT20019a	Locking Knob	1
20	OT20020	Outer Tube Assy	1
21	OT20021	Base	1
22	OT20022	Reinforcing Plate	1
23	OT20023	Wheel Holder	2
24	OT20024	Wheel	2



## Parts Diagram



## Specifications

The CDF20HV-P fan is a high output fan designed for industrial use. Constructed entirely from steel, it has a spring loaded extendable tilt pedestal stand

Model: .....	CDF20HV-P
Part No: .....	3231505
Voltage: .....	230vac
Wattage: .....	116w
Speeds: .....	3
Dimensions (LWH): .....	650x550x1270mm
Height Extended: .....	1582mm
Weight: .....	18Kg

## List of Contents

Before commencing with assembly, check for damage and shortages etc. Any damage or shortage should be reported to your Clarke dealer where the fan was originally purchased.

- 1 x Base assembly with castors
- 1 x Tube Assembly
- 1 x Fan Assembly
- 4 x M6 x 35 Pan Head Screws
- 2 x M6 x 20 Hex Head Screws
- 2 x Ø 6mm Plain Washers
- 2 x Ø 6mm Lock Washers

## Safety Precautions

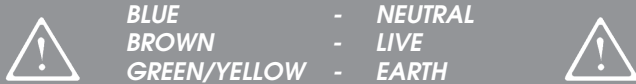
- **DO NOT** use in dusty environments.
- **DO NOT** use in environments with high fumes from chemicals etc.
- **DO NOT** use as an extractor fan.
- **DO NOT** use in areas of high humidity/water vapour, i.e. bathrooms etc.
- **DO NOT** connect fan to ducting system.

## Electrical Connections

This product is provided with a standard 13 amp, 230 volt (50Hz), BS 1363 plug, for connection to a standard, domestic electrical supply. Should the plug need changing at any time, ensure that a plug of identical specification is used.

### WARNING ! THIS APPLIANCE MUST BE EARTHED

This machine must be wired up in accordance with the following colour code:



- Connect the BLUE coloured cord to the plug terminal marked "N"
- Connect the BROWN coloured cord to the plug terminal marked "L"
- Connect the GREEN/YELLOW coloured cord to the plug terminal marked "E"

If this appliance is fitted with a plug which is moulded on to the electric cable (i.e. non-rewireable) please note:

1. The plug must be thrown away if it is cut from the electric cable. There is a danger of electric shock if it is subsequently inserted into a socket outlet.
2. Never use the plug without the fuse cover fitted.
3. Should you wish to replace a detachable fuse carrier, ensure that the correct replacement is used (as indicated by marking or colour code).
4. Replacement fuse covers can be obtained from your local dealer or most electrical stockists.



## Fuse Rating

The fuse in the plug must be replaced with one of the same rating (**13 amps**) and this replacement must be approved to BS1362.

If in doubt, consult a qualified electrician. Do not attempt any electrical repairs yourself.

## Cable Extension

Always use an approved cable extension suitable for the power rating of this tool (see specifications), the conductor size should also be at least the same size as that on the machine, or larger. When using a cable reel, always unwind the cable completely.

### IMPORTANT:

If a cable extension is needed, it is essential to comply with the following data.

Voltage	Extension length	Cable section
230v	Up to 20m	2.5mm <sup>2</sup>
230v	From 20 to 50m	4mm <sup>2</sup>

## Assembly

1. Attach the Reinforcing plate, (item 22) to the underside of base, (item 21) using four 5mm screws and lockwashers supplied.
2. Attach the wheel holders, (item 23) and wheels, (item 24) to the base using four 5mm screws nuts and lockwashers supplied.
3. Attach the outer tube, (item 20) to the base by raising the bell exposing the flange, secure using four 6mm screws and lockwashers supplied, lower the bell to hide the fixing screws

**Before continuing, ensure all screws etc are securely tightened.**

4. Attach Inner tube, (item 18) to the fan holder, (item 16) using two clips, (item 17) and securing with four 6mm screws, nuts and lockwashers.

**NOTE: loosely attach the clips to the fan holder first using the two shorter screws, then insert the inner tube into the clips, and secure using the two longer screws. Securely tighten before continuing.**

5. Insert the inner tube into the Outer tube and lock in place with the securing knob, (item 19a).

6. Using a large flat bladed screwdriver, gently pry the front fan grill off the back grill.

7. Attach the fan to the fan holder using the two coach type bolts, rubber spacers and locking knobs. Ensure the rubber spacer is fitted between the fan and fan holder, see Fig. 1.

8. Refit front grill.

9. Adjust to required height and angle.

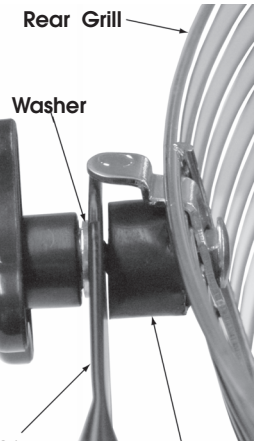
10. Plug in and switch on, adjust the fan speed to suit.

Locking knob

Fig. 1

Fan Holder

Rubber Spacer



### IMPORTANT

**NEVER use the fan with grills removed.**

### Cleaning

- Ensure the fan is switched off, and isolated from the main electrical supply by removing the plug from the socket.
- Do not use any harmful cleaning agents for cleaning.
- Only use a clean soft dampened cloth, wipe dry after cleaning.
- DO NOT bend the blades.
- The motor bearings are permanently sealed and do not require any additional lubrication.