

# Clarke®

## air



## 30 INCH DRUM FAN

MODEL NO: CAM110

PART NO: 3231590

## OPERATION & MAINTENANCE INSTRUCTIONS



GC1118 - ISS 3

---

## INTRODUCTION

---

Thank you for purchasing this CLARKE 30" (110V) Drum Fan.

Before attempting to use this product, please read this manual thoroughly and follow the instructions carefully. In doing so you will ensure the safety of yourself and that of others around you, and you can look forward to your purchase giving you long and satisfactory service.

## GUARANTEE

This product is guaranteed against faulty manufacture for a period of 12 months from the date of purchase. Please keep your receipt which will be required as proof of purchase.

This guarantee is invalid if the product is found to have been abused or tampered with in any way, or not used for the purpose for which it was intended.

Faulty goods should be returned to their place of purchase, no product can be returned to us without prior permission. This guarantee does not effect your statutory rights.

---

## SPECIFICATIONS

---

MODEL	CAM110	
Voltage:	110 VAC (50Hz)	
Input Wattage:	350 W	
Fan Speeds	Setting 1	700 rpm
	Setting 2	800 rpm
	Setting 3	900 rpm
Tilt Range	300°	
Max Air Flow	200 m <sup>3</sup> /min	
Dimensions (L x W x H):	900 x 330 x 990 mm	
Weight:	28.5 kg	
Sound Power Measured	75 dB(A) L <sub>Wa</sub>	

---

## **SAFETY PRECAUTIONS**

---

1. Always read the manual before use.
2. Avoid using in dusty environments.
3. Suitable for indoor use only.
4. Do not use in environments containing chemical fumes etc.
5. Do not use as an extractor fan.
6. Do not use in areas of high humidity/water vapour, i.e. bathrooms etc.
7. Do not connect the fan to duct system.
8. Do not cover the fan with clothing or any material that will restrict free airflow through the fan.
9. Never touch the blades with your hand or any loose object.
10. Always unplug the fan before moving it or performing maintenance. Don't touch the fan when your hands are wet.
11. Those who are not qualified electricians should not disassemble, repair or rebuild the fan.
12. Always unplug the fan when it is not in use.
13. Never unplug the fan by holding the cable. Unplug by holding the plug.
14. Never use the fan if the cable or plug are damaged.
15. Never use the fan close to fires.
16. Do not use this fan with any solid-state speed control device to reduce the risk of fire or electric shock.

---

## **ENVIRONMENTAL RECYCLING POLICY**

---



Through purchase of this product, the customer is taking on the obligation to deal with the WEEE in accordance with the WEEE regulations in relation to the treatment, recycling & recovery and environmentally sound disposal of the WEEE.

In effect, this means that this product must not be disposed of with general household waste. It must be disposed of according to the laws governing Waste Electrical and Electronic Equipment (WEEE) at a recognised disposal facility.

# ELECTRICAL CONNECTIONS



**WARNING! READ THESE ELECTRICAL SAFETY INSTRUCTIONS THOROUGHLY BEFORE CONNECTING THE PRODUCT TO A POWER SUPPLY.**

This product can be connected to one of the following power supplies:

- 110V Generator
- 110V Isolating Transformer
- 110V Site supply
- 230V Generator via a 110V transformer.

Connecting it to any other power source may cause damage.

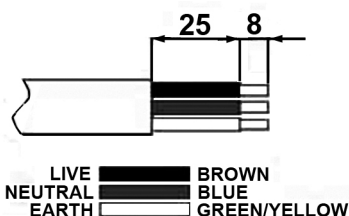
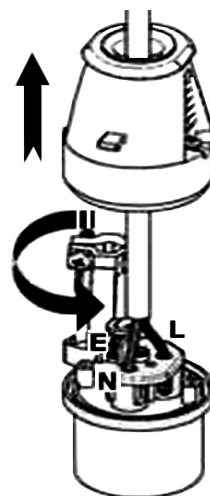
This product includes a fitted industrial plug to BS-EN 60309, and a cable for use with a 110 volt supply. On no account must a 230V, 13amp (BS1363) plug be used.

If using a portable 110V transformer make sure it has a rated capacity sufficient to take the load of the fan.

Should the plug need changing at any time, ensure that a plug of identical specification is used and proceed as follows:

1. Undo the socket screws & remove the rear section.
2. Rotate the cable clamp clear of the terminals.
3. Feed the cable through the rear gland in the plug.
4. Remove the cable sheath to the required lengths as shown in the diagram.
5. Terminate the correct wires in the correct terminal blocks as shown.
6. Remove the cable clamp screws. Clip the cable clamp back into position and place the clamp around the outer sheath of the cable. Replace the screws and tighten until the cable is securely held.
7. Replace the rear cover and tighten the cover screws.

If in any doubt, consult a qualified electrician. DO NOT attempt any repairs yourself.



---

## CONTENTS

---

Ensure the fan suffered no damage during transit and that all components are present. Should any loss or damage be apparent, please contact your CLARKE dealer immediately. The following components are supplied:

- 1 x Fan Assembly
- 2 x Rubber Feet with Mounting Brackets
- 2 x Moulded Wheels
- 1 x Handle
- Set of Fixing Bolts

---

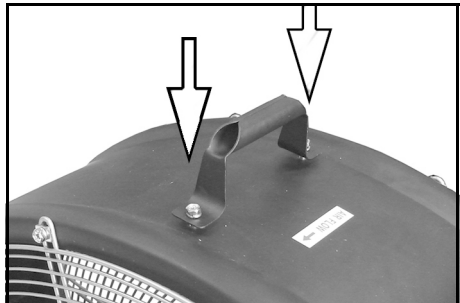
## ASSEMBLY

---

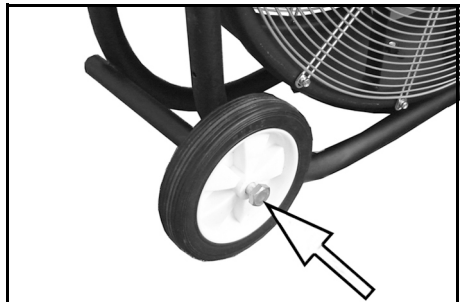
Some assembly is required before using the fan.

The following part numbers can be found on the parts list on page 9.

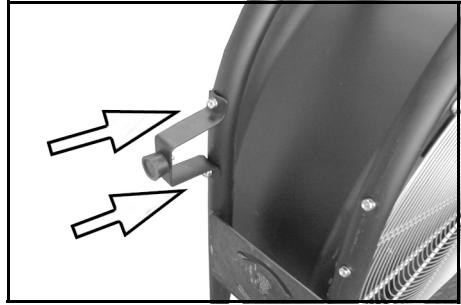
1. Fit the handle (item 13) to the fan housing (item 11) using the screws (item 12).



2. Fit the wheels (item 22) to the frame using the bolts (item 20) and washers (item 21).



3. Fit the foot brackets (item 27) using the screws (item 28) and washers (item 29).



## OPERATION

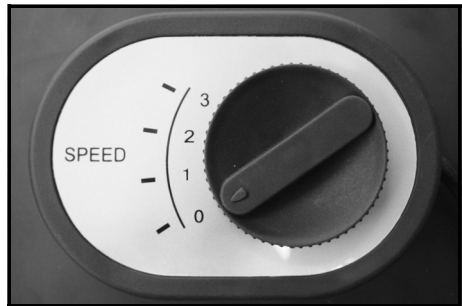


**WARNING: NEVER OPERATE THE FAN WITH THE FRONT GRILL REMOVED.**

Plug in to the power supply with the speed control set to 0, before adjusting the fan speed as below.

Turn the switch on the speed control to select the fan speed required.

- Position 0 - Off
- Position 1 - 700 rpm
- Position 2 - 800 rpm
- Position 3 - 900 rpm



---

# MAINTENANCE

---



**WARNING: ALWAYS DISCONNECT THE POWER CABLE FROM THE POWER SUPPLY BEFORE PERFORMING MAINTENANCE WORK**

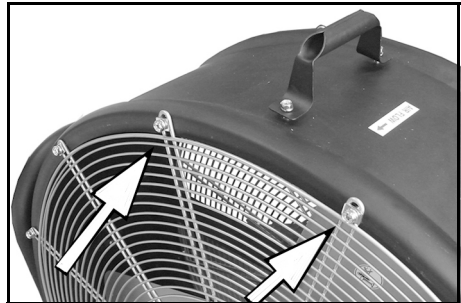
---

- The motor bearings are permanently sealed for life and do not require any additional lubrication.
- Have any repairs carried out by a suitably qualified person.

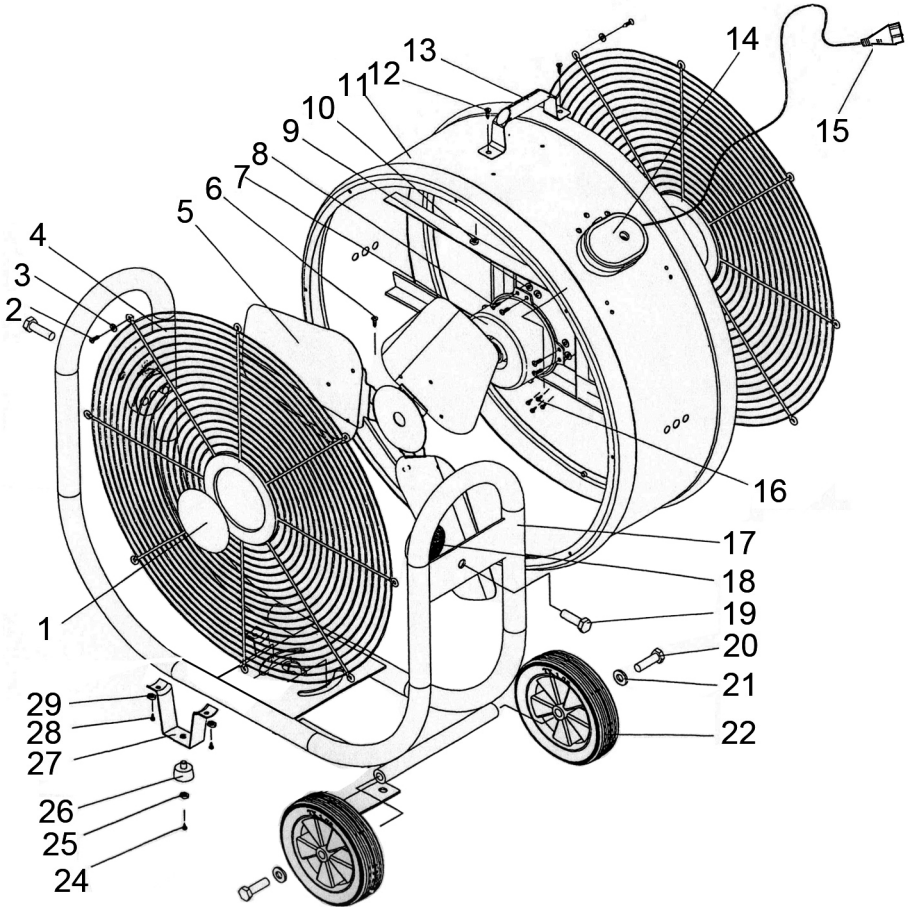
## CLEANING

If the fan has been operating for long periods in a very dusty environment, the blades and motor assembly may eventually require cleaning.

1. Unscrew the front grill and lift it away carefully.
2. Wipe the fan blades with dry cloth and remove any dust from the motor assembly with a soft paintbrush, vacuum cleaner or jet of compressed air.
  - Never use polish or any corrosive liquid that will damage the surface finish.
3. Replace the grill securely before use.



# COMPONENT PARTS





## COMPONENT PARTS

No	DESCRIPTION	No	DESCRIPTION
1	Brand Name Plate	16	Screw st4 x 12
2	Bolt M16 x 12	17	Steel Pipe
3	Washer 6mm	18	Shock Absorber
4.	Front/Rear Grill	19	Bolt M12 x 36
5	Fan Blade	20	Bolt M12 x 70
6	Screw M10 x 13	21	Washer 12mm
7	Motor	22	Wheel
8	Screw M6 x 12	23	n/a
9	Nut M6	24	Screw M5 x 10
10	Nut M6	25	Washer 5mm
11	Drum Fan Housing	26	Foot
12	Screw M6 x 12	27	Foot Bracket
13	Handle	28	Screw M6 x 12
14	Switch Box	29	Washer 6mm
15	Power Cable		

# DECLARATION OF CONFORMITY



**Clarke**<sup>®</sup>  
**INTERNATIONAL**

Hemnall Street, Epping, Essex CM16 4LG

## DECLARATION OF CONFORMITY

This is an important document and should be retained.

We hereby declare that this product(s) complies with the following directive(s):

- 2014/30/EU *Electromagnetic Compatibility Directive.*
- 2014/35/EU *Low Voltage Equipment Directive.*
- 2011/65/EU *Restriction of Hazardous substances.*

The following standards have been applied to the product(s):

- EN 61000-3-2:2014, EN 62233:2008, EN 55014-1:2017, EN 55014-2:2015, EN 61000-3-3:2013,
- EN 60335-1:2012+A11:2014+A13:2017, EN 60335-2-80:2003+A1:2004+A2:2009.

The technical documentation required to demonstrate that the product(s) meet(s) the requirement(s) of the aforementioned directive(s) has been compiled and is available for inspection by the relevant enforcement authorities.

The CE mark was first applied in: 2005

**Product Description:** 30" Drum Fan (110V)  
**Model number(s):** CAM110  
**Serial / batch Number:** N/A  
**Date of Issue:** 15/11/2018

Signed:

J.A. Clarke  
Director

## RELATED CLARKE PRODUCTS

DH10 & DH20 Dehumidifier



Ideal for domestic and office use. Removes excess moisture from the atmosphere preventing damp patches from forming and helps stop mould and mildew from damaging furniture.

Devil 370SP Infra-red Heater



Providing instant, clean, odour-free infra-red heat, these heaters are ideal when spot heating of objects, rather than air, they are extremely efficient as 95% of input energy is converted into heat output.

IRD40 Diesel Heater



This powerful 38kW diesel fired heater is ideal for spot heating outdoors and in well ventilated indoor areas such as factories, warehouses & halls etc.

CAM200,250,300 Ventilators



Ideal for automotive, industrial, commercial & hire use, for extracting foul air or drawing in fresh air

# A SELECTION FROM THE VAST RANGE OF

# Clarke®

## QUALITY PRODUCTS

### AIR COMPRESSORS

From DIY to industrial, Plus air tools, spray guns and accessories.

### GENERATORS

Prime duty or emergency standby for business, home and leisure.

### POWER WASHERS

Hot and cold, electric and engine driven - we have what you need

### WELDERS

Mig, Arc, Tig and Spot. From DIY to auto/industrial.

### METALWORKING

Drills, grinders and saws for DIY and professional use.

### WOODWORKING

Saws, sanders, lathes, mortisers and dust extraction.

### HYDRAULICS

Cranes, body repair kits, transmission jacks for all types of workshop use.

### WATER PUMPS

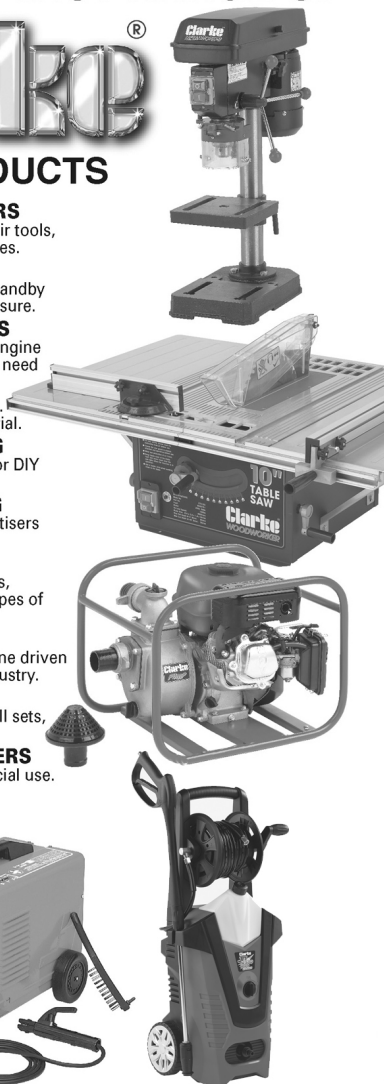
Submersible, electric and engine driven for DIY, agriculture and industry.

### POWERTOOLS

Angle grinders, cordless drill sets, saws and sanders.

### STARTERS/CHARGERS

All sizes for car and commercial use.



**PARTS & SERVICE: 0208 988 7400**

**E-mail: [Parts@clarkeinternational.com](mailto:Parts@clarkeinternational.com) or [Service@clarkeinternational.com](mailto:Service@clarkeinternational.com)**

**SALES: UK 01992 565333 or Export 00 44 (0)1992 565335**

**Clarke® INTERNATIONAL** Hemnall Street, Epping, Essex CM16 4LG  
[www.clarkeinternational.com](http://www.clarkeinternational.com)