

Clariflex®



SWING ARM MAGNIFYING LAMP

MODEL No: SAM 100

Part No: 5460530

OPERATING & MAINTENANCE
INSTRUCTIONS

Thank you for purchasing your new CLARKE swing arm magnifying lamp.

Before using this product, read this leaflet thoroughly, and follow the instructions carefully, you can then look forward to it giving long and reliable service.

GUARANTEE

This CLARKE product is guaranteed against faulty manufacture for a period of 12 months from the date of purchase. Your receipt is required as proof of purchase. This guarantee is invalid if the product is found to have been abused, or tampered with in any way, or not used for the purpose for which it was intended.

Faulty goods should be returned to their place of purchase, no product can be returned to us without prior permission. This guarantee in no way effects your statutory rights

ENVIRONMENTAL RECYCLING POLICY



Through purchase of this product, the customer is taking on the obligation to deal with the WEEE in accordance with the WEEE regulations in relation to the treatment, recycling & recovery and environmentally sound disposal of the WEEE.

In effect, this means that this product must not be disposed of with general household waste. It must be disposed of according to the laws governing Waste Electrical and Electronic Equipment (WEEE) at a recognised disposal facility.

ELECTRICAL CONNECTIONS

This product is supplied with a 13 amp, BS 1363 plug, for connection to a domestic 240 Volt (50Hz) electrical supply. Should it be necessary to renew the plug at any time, ensure the replacement is of identical specification.

IMPORTANT: The wires in the mains lead are coloured in accordance with the following code:

Green & Yellow -Earth, Blue - Neutral
Brown - Live

As the colours of the flexible cord of this appliance may not correspond with the coloured markings identifying terminals in your plug proceed as follows:

- Connect GREEN & YELLOW cable to terminal marked with a letter "E" or Earth symbol "⏚" or coloured GREEN or GREEN & YELLOW.
- Connect BROWN cable to terminal marked with a letter "L" or coloured RED.
- Connect BLUE cable to terminal marked with a letter "N" or coloured BLACK.

In the event that this product is fitted with a plug which is moulded onto the electric cable (i.e., non-rewirable) please note:

1. The plug must be thrown away if it is cut from the electric cable. There is a danger of electric shock if it is then inserted into a socket outlet.
2. Never use the plug without the fuse cover fitted.
3. Should you wish to replace a detachable fuse carrier, ensure that the correct replacement is used (as indicated by marking or colour code).
4. Replacement fuse covers can be obtained from your local dealer or most electrical stockists.
5. If the mains cable becomes frayed or damaged in any way, do not use the lamp until it has been replaced. Contact your local dealer for a replacement part.

Fuse Rating. The fuse in the plug is 3 amps, and must be replaced with one of the same rating and ASTA approved to BS 1362.

ASSEMBLY AND OPERATION

Your magnifying lamp is in two parts, the lamp with adjustable arms, and the clamp assembly (item 7), which comprises a "g" clamp on to which is mounted a holder for accommodating the spigot on the underside of the lamp base. The holder may be rotated by up to 180°, by slackening the knob (item 11), and re-tightening where required. This allows the lamp to be upright, with the "g" clamp mounted on surfaces at varying angles up to the vertical.

SETTING UP

The lamp is designed so that it will remain stable in any desired position. When installing your lamp, first slacken off the pivot pinch bolts, using the large adjuster knobs (item 6), to allow the arms to move freely. Tighten the pinch bolts so that they are firm, but do not over tighten. When the pivots are correctly tightened, the lamp should be capable of maintaining stability in any position, without the need for readjustment.

MAINTENANCE

The unit requires little maintenance, and is limited to changing the tube when necessary, and cleaning the lens.

Liquid glass cleaner may be used to clean the lens, used sparingly and with a soft dry cloth. **Do not** wet the tube or electrical connections.

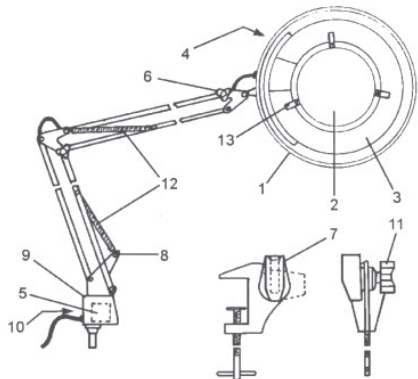
To change the tube, slacken off two of the tubes' spring retaining clips (item 13), allowing the tube to be withdrawn. Pull off the 4 pin plug, and connect it on the new tube. Place the tube on its seating, ensuring the wires connected to the plug are pushed back behind the tube shield. They should not be allowed to hang free, alongside or resting against the tube. Be careful not to force the plug as the pins are offset to **prevent** the plug from being connected at 90° to its' correct position. Finally, retighten the spring retaining clip screws.

Replacement tube - domestic florescent, 22 watt 210 o/d.

IMPORTANT: You should always switch the lamp OFF, and unplug from the mains before changing the tube or cleaning the lens.

PARTS LIST & DIAGRAM

Item	Description	Part No.
1	Cover	SAM 10001
2	Lens 5"	SAM 10002
3	Tube	5460535
4	Switch Assembly	SAM 10003
5	Transformer	SAM 10004
6	Adjuster Knob	N/A
7	'G' Clamp	SAM 10007
8	Stand	SAM 10008
9	Base	SAM 10009
10	Transformer Cover	SAM 10010
11	Clamp Screw Knob	N/A
12	Spring	N/A



A SELECTION FROM THE VAST RANGE OF

Clarke®

QUALITY PRODUCTS

AIR COMPRESSORS

From DIY to industrial, Plus air tools, spray guns and accessories.

GENERATORS

Prime duty or emergency standby for business, home and leisure.

POWER WASHERS

Hot and cold, electric and engine driven - we have what you need

WELDERS

Mig, Arc, Tig and Spot. From DIY to auto/industrial.

METALWORKING

Drills, grinders and saws for DIY and professional use.

WOODWORKING

Saws, sanders, lathes, mortisers and dust extraction.

HYDRAULICS

Cranes, body repair kits, transmission jacks for all types of workshop use.

WATER PUMPS

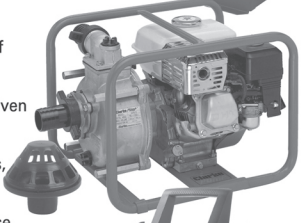
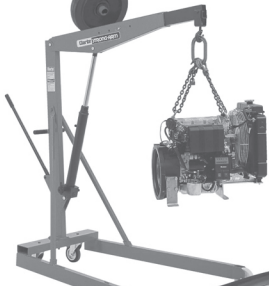
Submersible, electric and engine driven for DIY, agriculture and industry.

POWERTOOLS

Angle grinders, cordless drill sets, saws and sanders..

STARTERS/CHARGERS

All sizes for car and commercial use.



PARTS & SERVICE: 0208 988 7400

E-mail: Parts@clarkeinternational.com or Service@clarkeinternational.com

SALES: UK 01992 565333 or Export 00 44 (0)1992 565335

Clarke® INTERNATIONAL Hemnall Street, Epping, Essex CM16 4LG
www.clarkeinternational.com