

# Chambers®



## FOOT OPERATED 1.5 TONNE LOG SPLITTER MODEL NO: LOGBUSTER 10

PART NO: 3402046

## OPERATION & MAINTENANCE INSTRUCTIONS

LS0815

---

## INTRODUCTION

---

Thank you for purchasing this CLARKE Foot Operated 1.5 Tonne Log Splitter.

Before attempting to use this product, please read this manual thoroughly and follow the instructions carefully. In doing so you will ensure the safety of yourself and that of others around you, and you can look forward to your purchase giving you long and satisfactory service.

---

## GUARANTEE

---

This product is guaranteed against faulty manufacture for a period of 12 months from the date of purchase. Please keep your receipt which will be required as proof of purchase.

This guarantee is invalid if the product is found to have been abused or tampered with in any way, or not used for the purpose for which it was intended.

Faulty goods should be returned to their place of purchase, no product can be returned to us without prior permission.

This guarantee does not effect your statutory rights.

---

## SPECIFICATIONS

---

|                        | <b>Logbuster 10</b> |
|------------------------|---------------------|
| Part Number            | 3402046             |
| Weight                 | 12.7 Kg             |
| Dimensions (D x W x H) | 866 x 258 x 468 mm  |
| Rated Tonnage          | 1.5 Tonnes          |
| Maximum Log Length     | 400 mm              |
| Minimum Log Length     | 100 mm              |
| Maximum Log Diameter   | 200 mm              |

# SAFETY SYMBOLS



**READ  
INSTRUCTIONS  
BEFORE USE**



**WEAR  
SAFETY  
GLASSES**



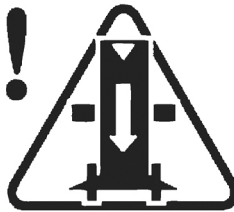
**WEAR  
PROTECTIVE  
GLOVES**



**WEAR  
PROTECTIVE  
BOOTS**



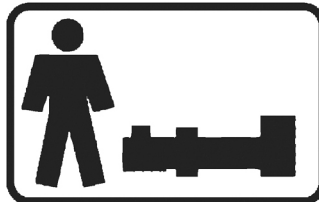
**DANGER OF CUTTING OR  
CRUSHING OF THE HAND**



**ALWAYS PAY ATTENTION  
TO THE MOVEMENT OF  
THE MACHINE**



**PROTECT YOUR HANDS**



**THIS MACHINE MUST ONLY BE  
OPERATED BY ONE PERSON**

**KEEP VISITORS  
& CHILDREN A  
SAFE DISTANCE  
AWAY FROM  
THE WORK  
AREA WHILST  
IN OPERATION**



**INSPECT THE LOG BUSTER  
BEFORE USE FOR  
ANY DAMAGE ETC**



**PROTECT THE  
ENVIRONMENT**

---

# GENERAL SAFETY RULES

---



**WARNING: READ ALL INSTRUCTIONS. FAILURE TO FOLLOW ALL INSTRUCTIONS LISTED BELOW MAY RESULT IN SERIOUS INJURY.**

**WARNING: SAVE THESE INSTRUCTIONS.**

---

## WORK AREA

1. **Keep the work area clean and well lit.** Cluttered and dark areas invite accidents.
2. **Do not operate the log splitter in explosive atmospheres, such as in the presence of flammable liquids, gases or dust.** The log splitter may create sparks which may ignite the dust or fumes.
3. **Keep children and bystanders away while operating the log splitter.** Distractions can cause you to lose control.
4. **The surface must be perfectly level to prevent the machine from moving during operation.**

## PERSONAL SAFETY

1. **Stay alert, watch what you are doing and use common sense when operating a log splitter. Do not use the log splitter while you are tired or under the influence of drugs, alcohol or medication.** A moment of inattention while operating the log splitter may result in serious personal injury.
2. **Use safety equipment. Always wear eye protection.** Safety equipment such as non-skid safety shoes, close fitting clothing and suitable work gloves should always be used.
3. **Do not overreach. Keep proper footing and balance at all times.** This enables better control of the log splitter in unexpected situations.
4. **Dress properly. Do not wear loose clothing or jewellery. Keep your hair, clothing and gloves away from moving parts.** Loose clothes, jewellery or long hair can be caught in moving parts.

## USAGE AND CARE

1. **Do not force the log splitter.** It will do the job better and safer at the rate for which it was designed.
2. **Store the log splitter out of the reach of children and do not allow persons unfamiliar with the log splitter or these instructions to operate the log splitter.** Log splitters are dangerous in the hands of untrained users.
3. **Maintain the log splitter. Check for misalignment or binding of moving parts, breakage of parts and any other condition that may affect the operation of the log splitter. If damaged, have the log splitter repaired before use.** Many accidents are caused by poorly maintained tools.

## SERVICE

1. **Have your log splitter serviced by a qualified repair person using only identical replacement parts.** This will ensure that safety is maintained.

---

## ADDITIONAL PRECAUTIONS FOR LOG SPLITTERS

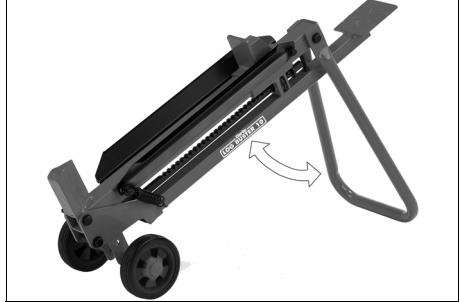
---

- All personnel must read the manual or receive correct training before they use the log splitter.
- Suitable personal protective equipment (PPE), including safety footwear, close fitting clothing and suitable work gloves, eye protection and hearing protection must be worn at all times.
- Before starting work, check for soundness of welded joints, securing nuts & bolts.
- Make sure that the log splitter functions as expected before use.
- NEVER tamper with the log splitter.
- NEVER use the machine whilst under the influence of alcohol, drugs, medicines, or when you are tired. A clear mind is essential for safety.
- The operator must take all necessary precautions to minimise the risk of accidental damage or injury due to wood being ejected from the machine.
- The log splitter is designed for one person operation only.
- Do not allow split logs to accumulate, always clean up as you work, accumulated split logs and wood chips can create a hazardous work environment.
- Split wood in the direction of the grain. Do not attempt to split a piece of wood across the grain as this could seriously damage the machine.
- Please note some particular characteristics of wood when being split. A small log can sometimes be hard to split if it has knots or particularly tough fibres. It is important NOT to persist if the log does not split fairly easily, you may damage your log splitter.

# BEFORE USE

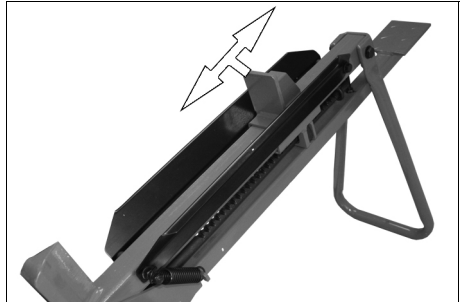
## SETUP

1. Place the log splitter on flat, level ground and swing the stand into position.
  - Make sure that the log splitter is stable.



## PREPARING THE LOGS

1. Cut the logs to between 100-400 mm long to fit into the log splitter. the logs must not exceed 200 mm in diameter.
2. Slide the pusher up with your hand and place a log on the log guide plate against the splitting wedge.



3. Lower the pusher against the top of the log you want to split.
  - Always split the logs in the direction of the grain.
  - Do not place the log across the logbuster for splitting. It is dangerous and can damage the log splitter.
  - Do not try to split two logs at the same time. One of them could fly up and hit you.



---

## OPERATING THE LOG BUSTER

---

Before use, make sure that all nuts and bolts are tight and that the tool is in good condition before using it.

---



CAUTION: DO NOT PUT YOUR HANDS ANYWHERE NEAR THE SPLITTING WEDGE DURING USE.

CAUTION: KEEP YOUR HANDS AWAY FROM SPLITS AND CRACKS WHICH OPEN IN THE LOG; THESE CAN CLOSE SUDDENLY AND CRUSH YOUR FINGERS.

CAUTION: KEEP CHILDREN, ANIMALS AND OBSERVERS AWAY WHEN PRESSING DOWN ON THE FOOT PEDAL TO PREVENT INJURY CAUSED BY POSSIBLE WOOD SPLINTERS AND/OR SPRING ACTION.

---

### **This log buster is designed to be operated by one person only**

- Keep feet and hands away from the wood, as it will fall to the floor.
  - If the log moves away from the wedge, turn the log 90° and try again.
1. Press down on the foot pedal.
    - The wood splitter will push down on the wood, causing the wood to start to split. If the wood does not fully split, the pusher will lock into place as you lift your foot up for another stroke of the foot pedal.
  2. Continue pumping the foot pedal until the log is split.
    - For hard logs, try to rotate the log by 90° to see if it can be split in a different direction. If you are still not able to split the log, this means that the wood exceeds the capacity of the log splitter and should be discarded to protect the log splitter
  3. Remove the log from the area, and repeat the operation with another piece of log.

### **FREEING A JAMMED LOG**

1. Slide the pusher up with your hand and tap the log away from the wedge with a rubber mallet to release the log.

---

## TROUBLESHOOTING

---

| PROBLEM             | CAUSE                         | REMEDY   |
|---------------------|-------------------------------|--|
| Fails to split logs | Log is improperly positioned. | Reposition the log See "Preparing the logs" on page 6. |
|                     | Wedge cutting edge is blunt.  | Refer to "Sharpening The Wedge" below.                 |

---

## MAINTENANCE

---



**WARNING: MAKE SURE THAT THE RAM ON THE LOGBUSTER IS NOT UNDER PRESSURE WHEN YOU ARE CLEANING, MOVING OR MAKING ANY ADJUSTMENTS.**

---

### CLEANING

- Clean the logbuster with a damp cloth to remove tree sap or dirt after each use.
  - Store it in a dry, secure location.
- 



**CAUTION: KEEP THIS TOOL OUT OF REACH OF CHILDREN AND OTHER UNAUTHORIZED PERSONS. PREVENT ACCIDENTS BY RESTRICTING ACCESS TO THIS TOOL.**

---

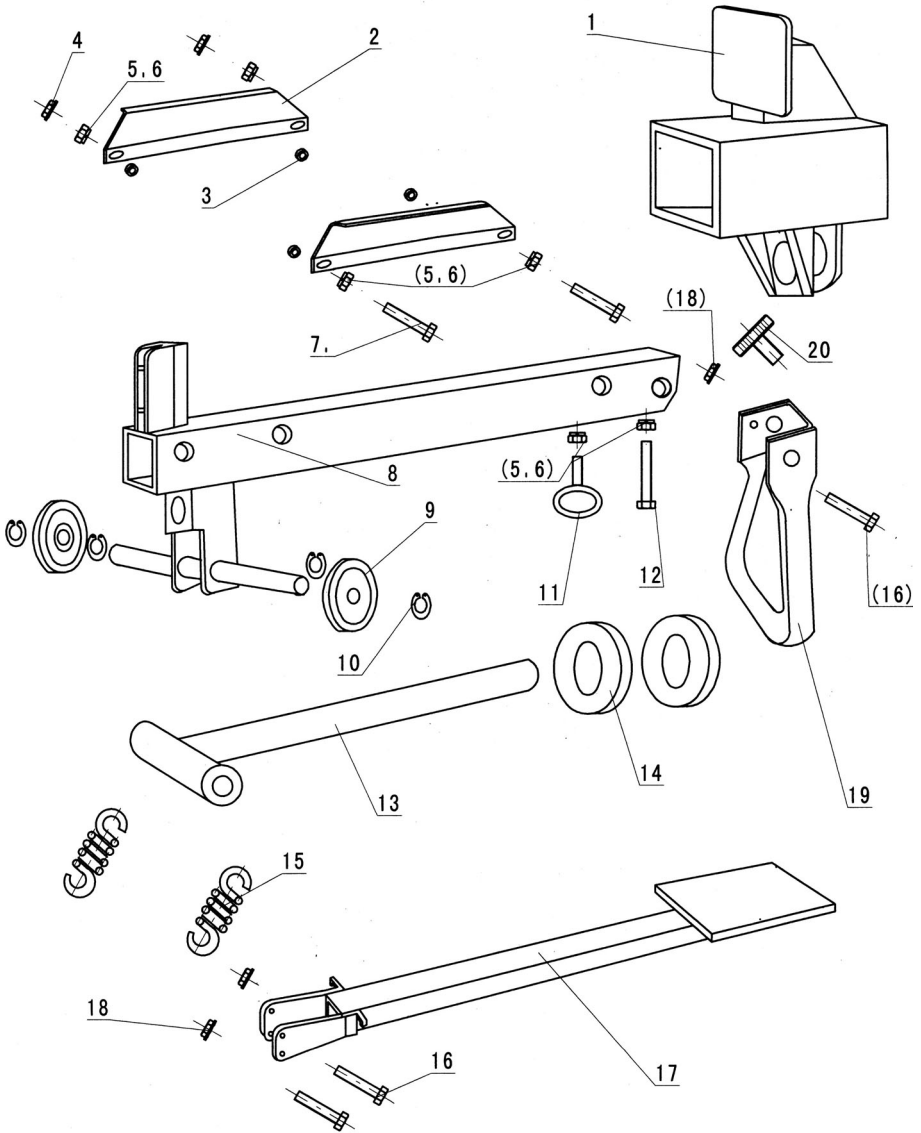
- Occasionally lubricate the main beam with paraffin or candle wax to help the pusher slide freely along it. Lightly oil all other metal parts to prevent rusting.
- 

### SHARPENING THE WEDGE

Occasionally sharpen the Splitting Wedge, using a file or sharpening stone (not included). A sharper splitting wedge will split logs more safely and effectively than a dull one.



# EXPLODED DIAGRAM



## PARTS LIST

| NO | DESCRIPTION          | PART NO    |
|----|----------------------|------------|
| 1  | Slidestop            | QMLOGB1001 |
| 2  | Log Guide Plate      | QMLOGB1002 |
| 3  | Spacer Bush          | QMLOGB1003 |
| 4  | M8 Lock Nut          | QMLOGB1004 |
| 5  | M8 Nut               | QMLOGB1005 |
| 6  | Spring Gasket        | QMLOGB1006 |
| 7  | Hexagonal Bolt       | QMLOGB1007 |
| 8  | Support Beam         | QMLOGB1008 |
| 9  | Wheel                | QMLOGB1009 |
| 10 | Circlip              | QMLOGB1010 |
| 11 | M8x40 Screw Ring     | QMLOGB1011 |
| 12 | M8x50 Hexagonal Bolt | QMLOGB1012 |
| 13 | Clamp Axis           | QMLOGB1013 |
| 14 | The Retaining Ring   | QMLOGB1014 |
| 15 | Spring               | QMLOGB1015 |
| 16 | Hexagonal Bolt       | QMLOGB1016 |
| 17 | Foot Pedal           | QMLOGB1017 |
| 18 | M10 Lock Nut         | QMLOGB1018 |
| 19 | Outrigger            | QMLOGB1019 |
| 20 | Fixed Handle         | QMLOGB1020 |

---

## NOTES

---

# A SELECTION FROM THE VAST RANGE OF

# Clarke®

## QUALITY PRODUCTS

### AIR COMPRESSORS

From DIY to industrial, Plus air tools, spray guns and accessories.

### GENERATORS

Prime duty or emergency standby for business, home and leisure.

### POWER WASHERS

Hot and cold, electric and engine driven - we have what you need

### WELDERS

Mig, Arc, Tig and Spot. From DIY to auto/industrial.

### METALWORKING

Drills, grinders and saws for DIY and professional use.

### WOODWORKING

Saws, sanders, lathes, mortisers and dust extraction.

### HYDRAULICS

Cranes, body repair kits, transmission jacks for all types of workshop use.

### WATER PUMPS

Submersible, electric and engine driven for DIY, agriculture and industry.

### POWER TOOLS

Angle grinders, cordless drill sets, saws and sanders.

### STARTERS/CHARGERS

All sizes for car and commercial use.



**PARTS & SERVICE: 0208 988 7400**

**E-mail: [Parts@clarkeinternational.com](mailto:Parts@clarkeinternational.com) or [Service@clarkeinternational.com](mailto:Service@clarkeinternational.com)**

**SALES: UK 01992 565333 or Export 00 44 (0)1992 565335**

**Clarke® INTERNATIONAL** Hemnall Street, Epping, Essex CM16 4LG  
[www.clarkeinternational.com](http://www.clarkeinternational.com)