

A SELECTION FROM THE VAST RANGE OF

Clarke®

QUALITY PRODUCTS

AIR COMPRESSORS

From DIY to industrial. Plus air tools, spray guns and accessories.

GENERATORS

Prime duty or emergency standby for business, home and leisure.

POWER WASHERS

Hot and cold, electric and engine driven - we have what you need.

WELDERS

Mig, Arc, Tig and Spot. From DIY to auto/industrial.

METALWORKING

Drills, grinders and saws for DIY and professional use.

WOODWORKING

Saws, sanders, lathes, mortisers and dust extraction.

HYDRAULICS

Cranes, body repair kits, transmission jacks for all types of workshop use.

WATER PUMPS

Submersible, electric and engine driven for DIY, agriculture and industry.

POWER TOOLS

Angle grinders, cordless drill sets, saws and sanders.

STARTER/CHARGERS

All sizes for car & commercial use.



Clarke®



AIR PRESSURISED PAINT FEED CONTAINER

Model Nos:

CPP5 • CPP11 • CPP30 • CPP40

OPERATING & MAINTENANCE INSTRUCTIONS



Clarke INTERNATIONAL

For spare parts and servicing, please contact your nearest dealer, or Clarke International on

020 - 8988 - 7400

e-mail: Parts@clarkeinternational.com e-mail: Service@clarkeinternational.com

Hemnal Street, Epping, Essex CM16 4LG



Please read these instructions carefully before using the Paint Pot

Thank you for purchasing this **CLARKE** Air Pressurised Paint Feed Container. Before using the device, please read this manual thoroughly and carefully follow all instructions given. This is for your own safety and that of others around you, and is also to help you achieve long and trouble free service from your new product.

CLARKE GUARANTEE

This CLARKE product is guaranteed against faulty manufacture for a period of 12 months from the date of purchase. Please keep your receipt as proof of purchase.

This guarantee is invalid if the product is found to have been abused or tampered with in any way, or not used for the purpose for which it was intended.

Faulty goods should be returned to their place of purchase, no product can be returned to us without prior permission.

This guarantee does not affect your statutory rights.

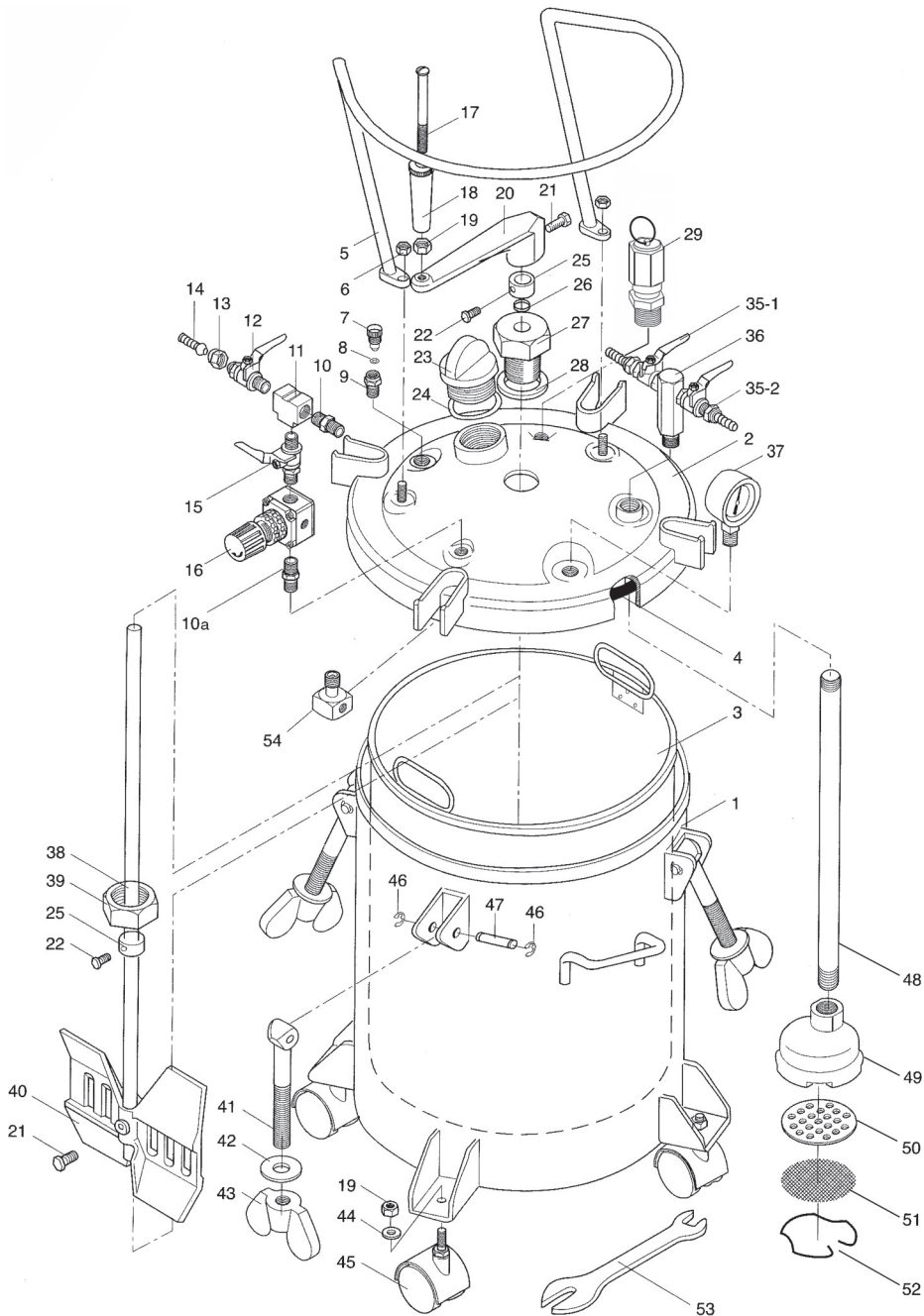
SPECIFICATIONS

	CPP5	CPP12	CPP30	CPP40
Inner Container capacity	3.25L	9.25L	24.5L	34L
Outer Container capacity	4.2L	11.7L	31.2L	43.4L
Fluid Type	Oil/Solvent based paints			
Maximum Operating Pressure	3bar	3bar	3bar	3bar
Absolute Maximum Pressure	5.5bar	5.5bar	5.5bar	5.5bar
Air Hose Connection	1/4" BSP	1/4" BSP	1/4" BSP	1/4" BSP
Liquid Hose Connection	3/8" BSP	3/8" BSP	3/8" BSP	3/8" BSP
Weight unpacked	5.85kg	14.5kg	24kg	26kg

Parts List - CPP 30 & 40

No.	Description	Part No:	No.	Description	Part No:
1	Container CPP30	1 KLCPP3001	25	Connecting ring	1 KLCPP3025
1	Container CPP40	1 KLCPP4001	26	O-ring	2 KLCPP3026
2	Lid assembly	1 KLCPP3002	27	Guide Bush	1 KLCPP3027
3	Inner Container CPP30	1 KLCPP3003	28	Seal Ring	1 KLCPP3028
3	Inner Container CPP40	1 KLCPP4003	29	Pressure Relief valve	1 KLCPP3029
4	Gasket	1 KLCPP3004	35	Fluid outlet Cock	2 KLCPP3035
5	Guard	1 KLCPP3005	36	Fluid Outlet Adapter	1 KLCPP3036
6	Hex. Nut	2 KLCPP3006	37	Pressure Gauge	1 KLCPP3037
7	Air Exhaust Valve	1 KLCPP3007	38	Agitator Rod CPP30	1 KLCPP3038
8	O-ring	1 KLCPP3008	38	Agitator Rod CPP40	1 KLCPP4038
9	Adapter	1 KLCPP3009	39	Hex. Nut	1 KLCPP3039
10	Air inlet adapter	2 KLCPP3010	40	Agitator	1 KLCPP3040
10a	Air adapter	2 KLCPP3010A	41	Swing Bolt	4 KLCPP3041
11	Tee Piece	1 KLCPP3011	42	Washer	4 KLCPP3042
12	Air Outlet Cock	1 KLCPP3012	43	Wing Nut	4 KLCPP3043
13	Nut	1 KLCPP3013	44	Washer	4 KLCPP3044
14	Air Outlet	1 KLCPP3014	45	Caster	4 KLCPP3045
15	Air inlet Cock	1 KLCPP3015	46	C-Snap Ring	8 KLCPP3046
16	Pressure Regulator	1 KLCPP3016	47	Cotter Pin	4 KLCPP3047
17	Bolt	1 KLCPP3017	48	Fluid tube CPP30	1 KLCPP3048
18	Handle	1 KLCPP3018	48	Fluid Tube CPP40	1 KLCPP4048
19	Hex. Nut	5 KLCPP3019	49	Fluid Pick-Up	1 KLCPP3049
20	Handle Lever	1 KLCPP3020	50	Filter Support	1 KLCPP3050
21	Bolt	1 KLCPP3021	51	Filter	1 KLCPP3051
22	Bolt	1 KLCPP3022	52	Snap Ring	1 KLCPP3052
23	Cap Screw	1 KLCPP3023	53	Spanner	1 KLCPP3053
24	Sealing Ring	1 KLCPP3024	54	Air flow guide	1 KLCPP3054

Parts Diagram - CPP 30 & 40



SAFETY PRECAUTIONS

1. **ALWAYS** keep the unit perfectly clean. This will not only prolong its life, but will also ensure you get the best results.
2. **NEVER** exceed an air pressure supply of 80psi to the product.
3. **NEVER** attempt to adjust the safety valve
4. **NEVER** tamper with the product or modify in any way, as this could prove to be dangerous and will invalidate the guarantee.
5. **ONLY** use the product for the purpose for which it is intended,
6. **ALWAYS** wear approved impact resistant SAFETY GOGGLES. (Eye glasses are NOT safety glasses), and a FACE MASK
7. **DO NOT** remove any labels. Damaged labels should be replaced.

AIR SUPPLY

WARNING

Compressed air can be dangerous. Ensure that you are thoroughly familiar with all precautions relating to the use of compressors and compressed air supply.

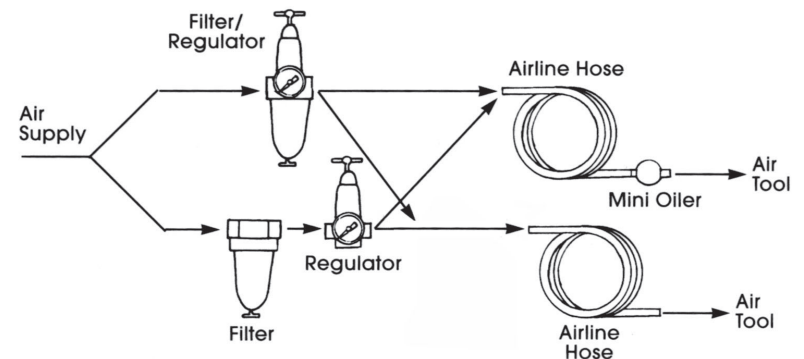


Air pressure supply to the container should not be greater than 80psi. Higher pressure and unclean air, will shorten the tools' life because of faster wear, and could be a safety hazard. Water in the air line will also cause damage. Ensure it is properly maintained at all times.

The recommended procedure to connect this product to an air supply, is shown below. A filter/regulator should always be placed in line with the supply and the paint pot.

The air inlet used for connecting air supply, has a standard 1/4" BSP thread.

Line pressure, or hose inside diameter, should be increased to compensate for unusually long air hoses (over 10m). Minimum hose diameter should be 6mm (1/4") ID., and fittings should have the same inside dimensions.



FEATURES

Fig.1

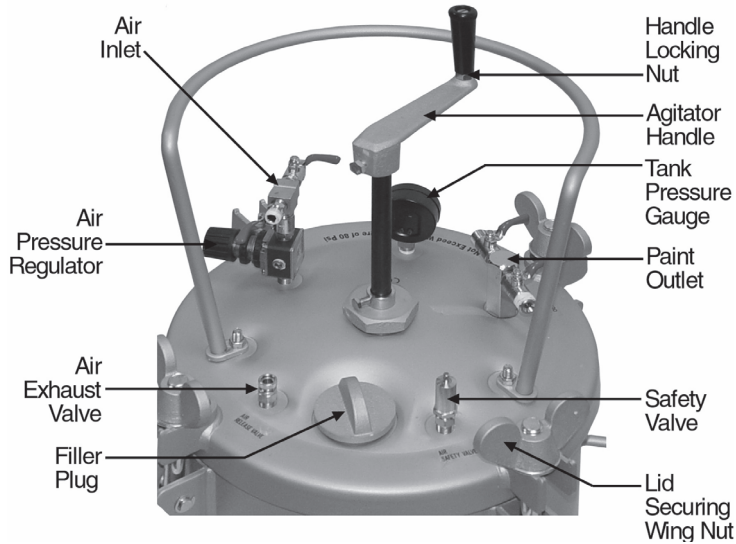


Fig.2

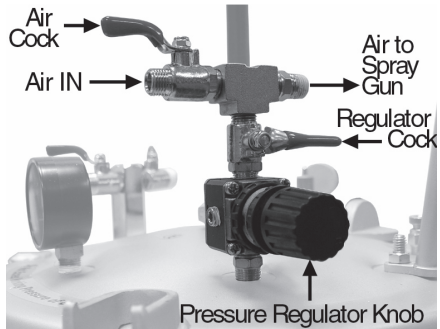
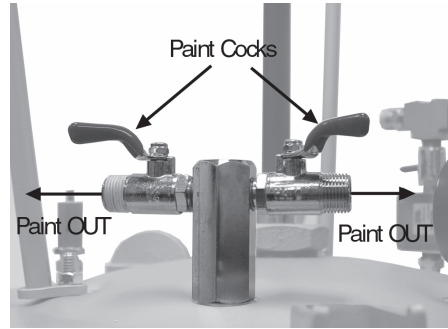


Fig.3



The illustration above is of a CPP30, but components of other models are similar.

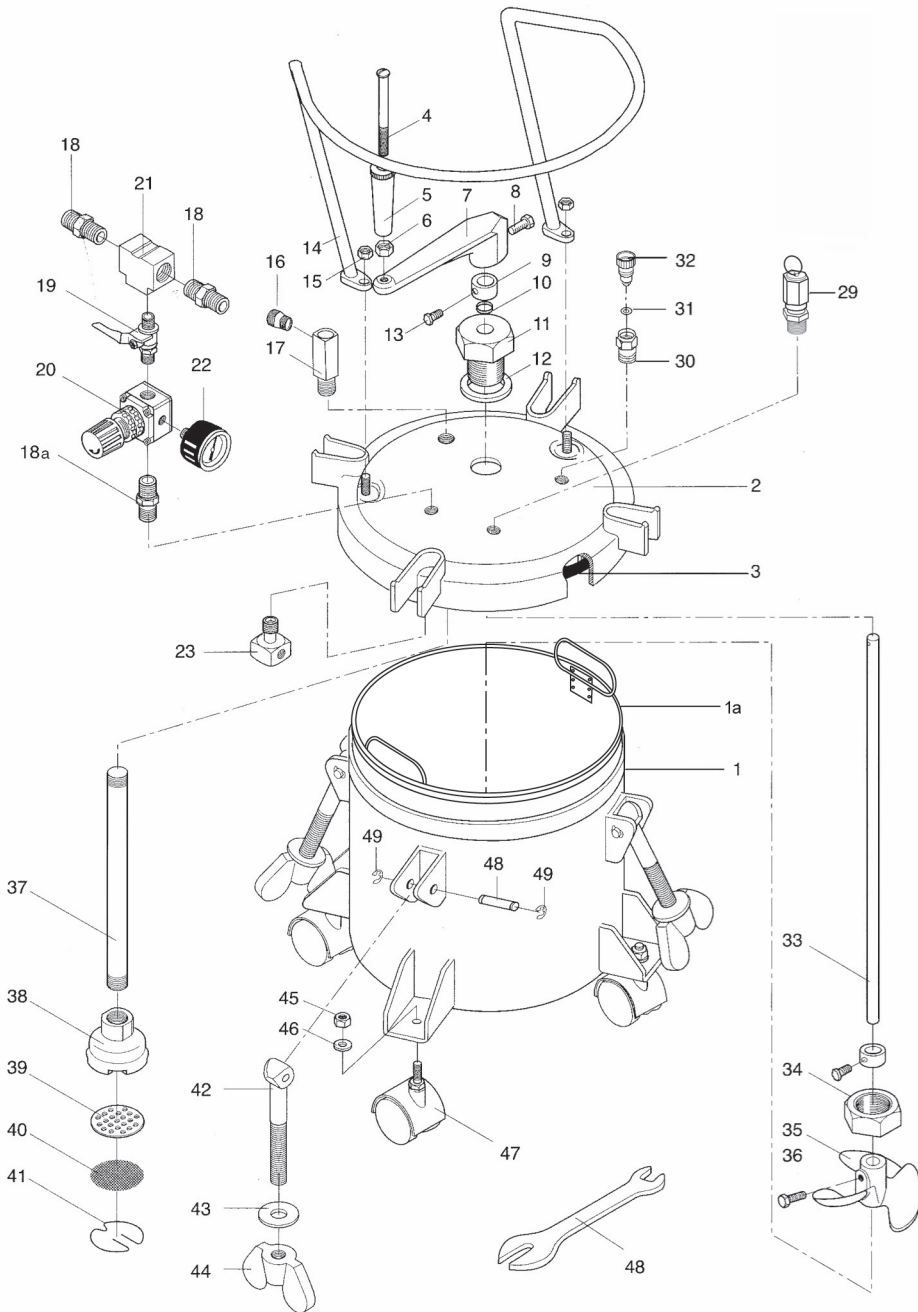
Parts List - CPP 11

No.	Description	Part No:	No.	Description	Part No:
1	Container	1 KLCPP1101	22	Pressure gauge	1 KLCPP1122
1a	Inner Container	1 KLCPP1101a	29	Pressure Relief Valve	1 KLCPP1129
2	Lid Assy	1 KLCPP1102	30	Adapter	1 KLCPP1130
3	Gasket	1 KLCPP1103	31	O-ring	1 KLCPP1131
4	Bolt	1 KLCPP1104	32	Air Exhaust Valve	1 KLCPP1132
5	Handle	1 KLCPP1105	33	Agitating rod	1 KLCPP1133
6	Nut Hex	1 KLCPP1106	34	Hex. Nut	1 KLCPP1134
7	Hand Lever	1 KLCPP1107	35	Agitator	1 KLCPP1135
8	Bolt	1 KLCPP1108	36	Screw	1 KLCPP11036
9	Connecting Ring	2 KLCPP1109	37	Fluid Tube	1 KLCPP1137
10	O-Ring	2 KLCPP1110	38	Pick-Up	1 KLCPP1138
11	Guide Bush	1 KLCPP1111	39	Filter Support	1 KLCPP1139
12	Seal Ring	1 KLCPP1112	40	Filter	1 KLCPP1140
13	Screw bolt	2 KLCPP11013	41	Snap ring	1 KLCPP1141
14	Guard	1 KLCPP1114	42	Swing bolt	4 KLCPP1142
15	Hexagon nut	2 KLCPP1115	43	Washer	4 KLCPP1143
16	Adapter	1 KLCPP1116	44	Wing Nut	4 KLCPP1144
17	Fluid Outlet adapter	1 KLCPP1117	45	Nut	4 KLCPP1145
18	Air Inlet Adapter	2 KLCPP1118	46	Washer	4 KLCPP1146
18a	Adapter	1 KLCPP1118a	47	Caster	4 KLCPP1147
19	Air Cock	1 KLCPP1119	48	Spanner	4 KLCPP1148
20	Pressure Regulator	1 KLCPP1120	49	C-Snap Ring	8 KLCPP1149
21	Tee Piece	1 KLCPP1121			

This Paint Feed Container is designed primarily for use in spraying oil and solvent based paint.

Clarke International provides a range of Spray Guns which may be used with these Feed Containers. Please see your local dealer for the HVLP and PRO Ranges.

Parts Diagram - CPP 11



METHOD OF OPERATION

Prior to use, ensure the casters are properly screwed to their housings where appropriate

WARNING!

ALWAYS check to ensure the container is NOT under pressure, by checking the pressure gauge and opening the air exhaust valve - turn the knurled ring nut anticlockwise. Tighten the ring nut once again once all air is exhausted.

1. Fill the container with paint as follows:
 - Undo each lid securing wing nut and swing the bolts out of the way.
 - Lift off the lid.
 - Fill the inner container with paint.

NOTE: It is permissible to fill the container itself, but we strongly recommend the inner container be used at all times, as it is easier to clean.

- Replace the lid, ensuring the wing nuts are tightened **progressively**.

NOTE: Models CPP 30 and CPP40 are provided with filler plugs in the lid. These may be used if preferred, but take care to comply with all precautions before undoing

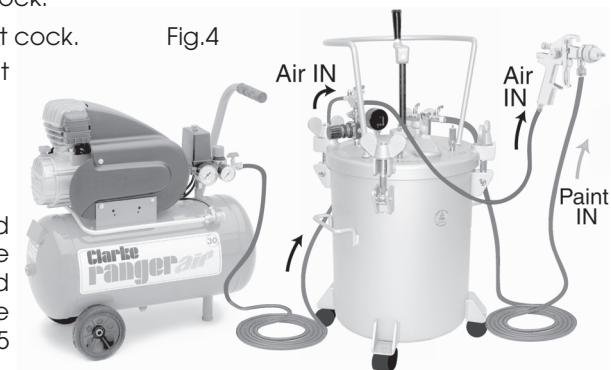
2. Connect the air supply hose to the air inlet.

NOTE: See notes on Air Supply on page 4.
3. Connect the air hose from the spray gun, to the air outlet.
4. Connect the paint hose from the spray gun to the paint outlet.
5. Ensure the pressure regulator knob is turned fully anticlockwise, then turn ON the air supply from compressor/air supply to the paint pot. Where necessary, turn ON the air inlet cock at the cylinder, followed by the pressure regulator cock.
6. Turn the pressure regulator knob slowly clockwise to pressurise the container. Working pressure will depend upon the consistency of the medium, but must NEVER exceed 3bar. If the medium is sluggish at this pressure, then it is of too thick consistency, and should not be sprayed.

7. Turn ON the air outlet cock.
8. Turn ON the paint outlet cock.
9. Finally, make adjustment to the spray pattern according to the spray gun manufacturers instructions.

The paint should be agitated at regular intervals during use to ensure consistency and avoid colour difference due to the paint settling. The CPP5 may be shaken gently.

A typical configuration is shown in Fig.4.



MAINTENANCE

It is important to clean the complete unit thoroughly at the end of any operation.

1. Turn OFF air to the container.
2. Turn the air exhaust valve knurled ring nut anticlockwise and allow the container to completely depressurise.
3. Loosen all lid wing nut securing nuts, swing back the bolts and move the lid so that it rests at one side of the container.
4. Hold the spray gun and hose above the level of the unit and pull the spray gun trigger to allow paint in the hose to drain back into the container. The paint cock should be open (where fitted).
5. Empty the container of paint, then clean it thoroughly with solvent or white spirits etc., depending upon the type of paint being sprayed.
Clean and dry all components that have come into contact with paint - agitator etc.
6. With the container and other components cleaned thoroughly, pour clean solvent or other cleaner, into the container.
7. Replace the lid and tighten the wing nuts - progressively.
8. Turn ON the air to the container and pull the spray gun trigger. Keep it pressed until only clean solvent or other cleaner is ejected from the spray gun.
9. Repeat steps 1 - 4 to allow solvent or other cleaner to drain back into the container.

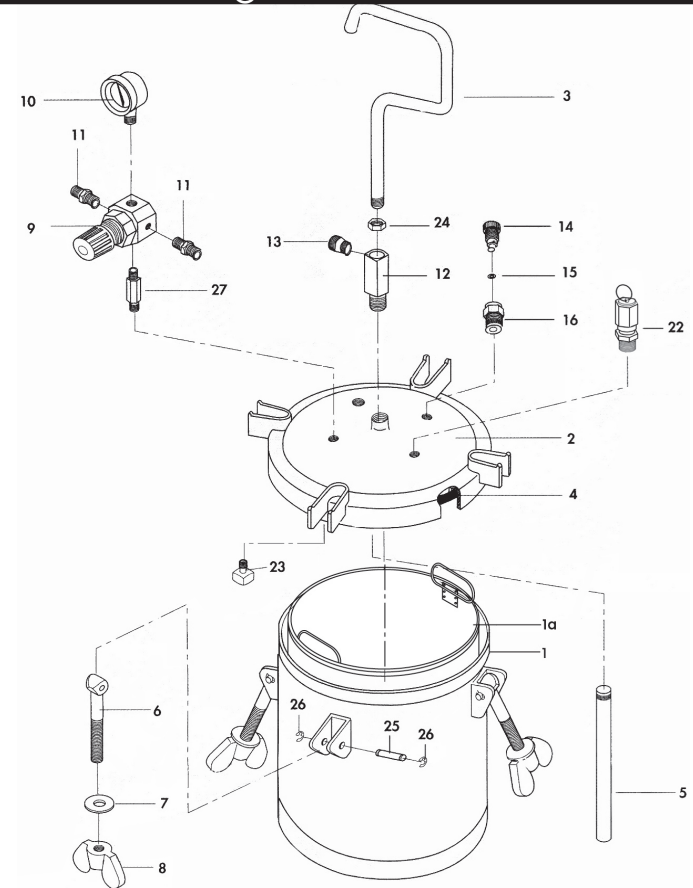
10 Finally empty the container and dry all components thoroughly,

Store in a clean dry place, with all cocks closed, and the lid loose.

Periodically, pressurise the container to 5.5bar in order to test the safety valve.

If it does not blow off at this pressure, do not use the appliance...have the Pressure Relief Valve replaced.

Parts List & Diagram - CPP 5



No.	Description	Part No:	No.	Description	Part No:
1	Container	1 KLCPP501	12	Fluid Outlet	2 KLCPP512
1a	Inner Container	1 KLCPP501a	13	Fluid Outlet Adapter	1 KLCPP513
2	Lid Assy.	1 KLCPP502	14	Air Exhaust Valve	1 KLCPP514
3	Handle	1 KLCPP503	15	O-Ring	1 KLCPP515
4	Gasket	1 KLCPP504	16	Adapter	1 KLCPP516
5	Fluid Tube	1 KLCPP505	22	Pressure Relief Vlv	1 KLCPP522
6	Swing Bolt	1 KLCPP506	23	Air Flow Guide	1 KLCPP523
7	Washer	4 KLCPP507	24	Nut	1 KLCPP524
8	Wing Nut	4 KLCPP508	25	Cotter Pin	4 KLCPP525
9	Pressure Regulator	4 KLCPP509	26	Snap Ring	8 KLCPP526
10	Pressure Gauge	1 KLCPP510	27	Adapter Post	1 KLCPP527
11	Adapter - Air Inlet	1 KLCPP511			

PARTS & SERVICE CONTACTS

For Spare Parts and Service, please contact your nearest dealer,
or CLARKE International, on one of the following numbers.

PARTS & SERVICE TEL: 020 8988 7400

PARTS & SERVICE FAX: 020 8558 3622

or e-mail as follows:

PARTS: Parts@clarkeinternational.com

SERVICE: Service@clarkeinternational.com