

Clarke®

CONTRACTOR®



CERAMIC HEATER

MODEL NO: DEVIL 351C

PART NO: 6920256

OPERATING & MAINTENANCE INSTRUCTIONS



ORIGINAL INSTRUCTIONS

GC08/22

INTRODUCTION

Thank you for purchasing this CLARKE Ceramic Heater.

Before attempting to use this product, please read this manual thoroughly and follow the instructions carefully. In doing so you will ensure the safety of yourself and that of others around you, and you can look forward to your purchase giving you long and satisfactory service.

SPECIFICATIONS

Model Number	Devil 351C
Part Number	6920256
Weight	8.6 kg
Dimensions (L x W x H)	610 x 410 x 400mm
Rated input Current	21.8A
Supply Voltage	110V/50 Hz
Plug Rating	32 A
Ingress Protection Class	IP20
Max Heat Output	2.4W (1.2 per element)

Please note that the details and specifications contained herein, are correct at the time of going to print. However, CLARKE International reserve the right to change specifications at any time without prior notice.

GUARANTEE

This product is guaranteed against faulty manufacture for a period of 12 months from the date of purchase. Please keep your receipt which will be required as proof of purchase.

This guarantee is invalid if the product is found to have been abused or tampered with in any way, or not used for the purpose for which it was intended.

Faulty goods should be returned to their place of purchase, no product can be returned to us without prior permission.

This guarantee does not effect your statutory rights.

THE FOLLOWING TABLE ADDRESSES THE INFORMATION REQUIREMENTS OF REG.2015/1188

Item	Symbol	Value	Unit
Heat output			
Measured seasonal space heating energy efficiency			35%
Nominal heat output	P _{nom}	2.4	kW
Minimum heat output (indicative)	P _{min}	1.2	kW
Maximum continuous heat output	P _{max}	2.4	kW
Auxiliary electricity consumption			
At nominal heat output	e _{lmax}	n/a	kW
At minimum heat output	e _{lmin}	n/a	kW
In standby mode	e _{lSB}	0.001	kW
Type of heat input for electric storage local heaters only			
Manual heat charge control with integrated thermostat			No
Manual heat charge control with room and/or outdoor temperature feedback			No
Electronic heat charge control with room and/or outdoor temperature feedback			No
Fan assisted output			No
Type of heat output/room temperature control (select one)			
Single stage heat output, no temperature control			No
With mechanical thermostat temp control			No
With electronic temperature control			Yes
Electronic temperature control with day timer			No
Electronic temperature control with week timer			No
Other control options (multiple selections possible)			
Room temperature control with presence detection			No
Room temperature control with open window detection			Yes
Room temperature control with distance control option			No
Room temperature control with adaptive start control			No
Room temperature control with working time limitation			Yes
Room temperature control with black bulb sensor			Yes

GENERAL SAFETY RULES

Please keep these instructions in a safe place for future reference.

1. These heaters are for INDOOR USE ONLY in well insulated spaces.
2. DO NOT expose the heater or power cable to rain or wet conditions. Any water entering the heater will increase the risk of electric shock. DO NOT use this heater in a bathroom, shower room or any other wet environment.
3. NEVER locate the heater near combustible materials such as curtains, furniture etc. Allow at least 1 metre distance.
4. DO NOT locate the heater close to an adjacent wall or low ceiling. Allow a distance of at least 1 metre from a wall or ceiling. Avoid placing the heater directly below power socket outlets.
5. Take care to ensure that the wire guard cannot be covered.
6. DO NOT operate heater in explosive atmospheres such as in the presence of flammable liquids, gases or dust such as in a paint spray booth or any explosive environment.
7. NEVER stand the heater on a movable vehicle where it could tip over.
8. DO NOT allow the heating elements to become covered with dust which could become a fire hazard. If used in a dusty workplace it should be cleaned as described under Cleaning and Maintenance.
9. NEVER touch the heating elements for at least 15 minutes after switching off.
10. DO NOT leave the heater unattended.
11. If children are present always use with a fireguard.
12. Store the heater out of the reach of children and do not allow persons unfamiliar with these instructions to operate it.
13. This heater must only be located on a firm, level surface but is fitted with an anti-tilt switch which will turn the unit off if it should tip over.
14. ALWAYS disconnect the heater from the power supply before moving it.
15. NEVER leave the heater unattended while in use. Turn off at night if unattended.

ELECTRICAL SAFETY

1. Electrical appliances must match the power outlet. NEVER modify the plug in any way. DO NOT use adaptor plugs with earthed (grounded) appliances. Correct plugs and outlets will reduce the risk of electric shock.

2. DO NOT abuse the electrical cable. Never use the cable for pulling or unplugging the heater. Keep the cable away from sources of heat, oil, sharp edges or moving parts. Damaged or tangled cables increase the risk of electric shock.
3. DO NOT use this product with an extension cable.
4. ALWAYS disconnect from the power supply before moving the heater or performing any cleaning or maintenance tasks.
5. Keep the power cable well away from machines and ensure an adequate electrical supply is close at hand so that the operation is not restricted by the length of the cable.
6. Inspect the power cable regularly for signs of damage. DO NOT use if it is damaged and ALWAYS keep it away from the source of heat.
7. Check the heater for damage before use. Any damage should be properly repaired or the part replaced. If in doubt, DO NOT use. Consult your local CLARKE dealer.

SERVICE & REPAIRS

1. If necessary, have your heater repaired by a qualified person using identical replacement parts. This will ensure that the safety of the appliance is maintained.

ENVIRONMENTAL RECYCLING POLICY



Through purchase of this product, the customer is taking on the obligation to deal with the WEEE in accordance with the WEEE regulations in relation to the treatment, recycling & recovery and environmentally sound disposal of the WEEE.

In effect, this means that this product must not be disposed of with general household waste. It must be disposed of according to the laws governing Waste Electrical and Electronic Equipment (WEEE) at a recognised disposal facility.

This product contains valuable raw materials. Metal products should be taken to your local civic amenity site for recycling of metal products. Recycle unwanted materials instead of disposing of them as waste. All unwanted accessories and packaging should be sorted and taken to a recycling centre for disposal in a manner which is compatible with the environment.

ELECTRICAL CONNECTIONS

This 110V heater is fitted with a 32 amp, three pin industrial plug to EN 60309 and **MUST** be connected to a 110 volt, 1 phase 50 Hz supply through a suitably fused isolator switch. On no account must a 230V, 13 amp (BS1363) plug be used.

NOTE: If a portable 110V transformer is used, make sure it has a rated capacity sufficient to take the load of the heater.

If the heater is hard wired into the electrical system all work must be carried out in accordance with IEE regulations.

If the plug has to be changed due to damage, a replacement should be fitted, following the wiring instructions shown below. The old plug must be disposed of as insertion into a 110v socket could cause an electrical hazard.



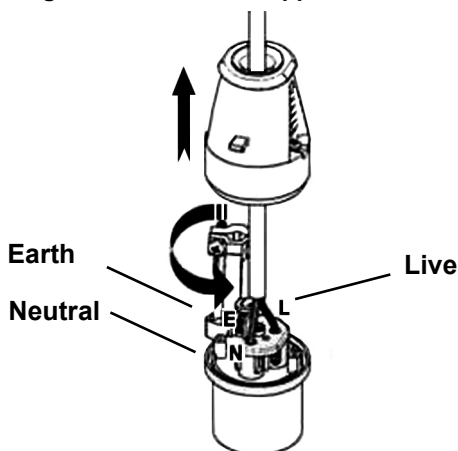
**WARNING: THE WIRES IN THE POWER CABLE OF THIS PRODUCT ARE COLOURED IN ACCORDANCE WITH THE FOLLOWING CODE:
BLUE = NEUTRAL BROWN = LIVE YELLOW = EARTH**

If the colours of the wires in the power cable of this product do not correspond with the markings on the terminals of your plug, proceed as follows.

- The **Blue** wire must be connected to the terminal which is marked **N** or **Neutral**.
- The **Brown** wire must be connected to the terminal which is marked **L** or **Live**.
- The **Yellow** wire must be connected to the terminal which is marked **E** or **Earth**.

If in any doubt, consult a qualified electrician. **DO NOT** attempt any repairs yourself.

Plug must be BS60309 approved.



UNPACKING AND ASSEMBLY

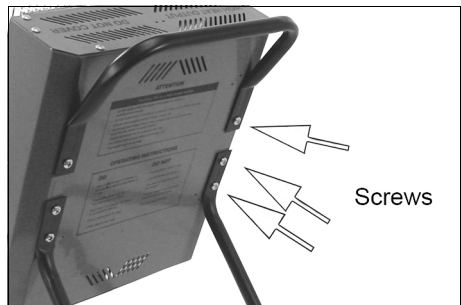
Before assembling, please check contents against the following list and advise your dealer immediately if any parts are missing.

- 1 x Heater
- 2 x Legs
- 1 x Handle
- 1 x Remote Controller (batteries not included)
- 1 x Set fixings (screwed into back of the heater)



CAUTION: TAKE CARE TO REMOVE ALL PACKAGING MATERIALS FROM WITHIN THE FRONT OF THE HEATER. YOU WILL NEED TO RELEASE THE SCREWS SECURING THE FRONT GRILLE IN ORDER TO DO THIS.

1. Remove the 4 x lower screws from the heater and use them to attach the legs as shown.
2. Repeat with the two remaining screws to fit the handle as shown.
3. DO NOT use the heater without fitting the legs.



OPERATION



WARNING: FOR SAFE OPERATION OF THIS HEATER IT IS ESSENTIAL TO READ THESE INSTRUCTIONS BEFORE USE.

WARNING: PLEASE NOTE THAT THE HEATING ELEMENTS OF THIS PRODUCT DO NOT GLOW WHILST IN OPERATION. ANY PICTURES SHOWING THIS IN ADVERTISING MATERIAL ARE FOR ILLUSTRATION ONLY.

USING THE REMOTE CONTROL

All operations must be done using the remote control.

- 2 x AAA batteries are required and are installed as shown by the diagram found inside the control unit.
- The remote control must be directed at the heater display panel. It has a range of approx 2.5 metres and must be aimed at the correct angle.
- The function of each button on remote control is the same as operation panel.




MANUAL OPERATION

1. Stand the heater on a firm, level surface and following all safety precautions, connect to a suitable power supply.
 - The heater is equipped with an anti-tilt switch that automatically cuts the power off should the heater tip over. If this happens, stand the heater upright and it will immediately re-set.
2. Switch on the power at the primary switch.
 - The heater will be in Standby with the display showing PO.



3. Press  to turn on the upper heating lamp and the screen will show P1.




4. Press   to select the mode from P1-P6, referring to the different temperature settings.


P1	Only the upper element is working
P2	24°
P3	26°
P4	28°
P5	30°
P6	Both elements are working

- During mode P2-P5 the upper element is working all the time and the lower element will be turned off automatically according to the set temperature.


5. The user can change from mode

P1 and P6 by pressing . The screen will show a cascade effect when in mode P6.



6. To power off the unit, press  again, the heater stops working, and returns to standby with the screen showing 'PO'.
7. Then switch off the main switch and unplug the heater.

SETTING THE SHUTDOWN TIMER

1. Press  to set the shutdown timer. The time on the screen flickers with initial status 00:00.



2. Press  and  to set the time to turn the heater off.

- It increases/decreases 1 hour per press.

3. Press  when you finish setting and the heater will be in the countdown mode.



- It will shut down 2 hours later.

4. When the time is up, the heater turns off automatically and enters the standby state P0.

FUNCTION FOR DETECTING OPENING WINDOWS

1. When the ambient temperature drops over 5°C within 10 minutes, the heater will turn off automatically and enters a standby state with three alarm beeps.

- Users need to turn on the heater manually by pressing- 

CLEANING & MAINTENANCE

Always allow the heater to cool down for at least 15 minutes and disconnect it from the mains supply before performing any maintenance tasks.

PERIODICALLY

1. Inspect the power cable for damage. Undue heat will cause the cable to stiffen and crack. If this is found, have the cable replaced. Check your cable routing and ensure it is well away from the heat source.
2. Should the heater become dirty, disconnect it from the power supply, remove the front guard and wipe the reflector and elements with a clean damp cloth. DO NOT use abrasive cleaners. Take care that no moisture enters the heater.
3. Refer to your CLARKE dealer if internal maintenance is required.
4. When storing the heater, allow it to cool down before storing it in a dry, well ventilated place.

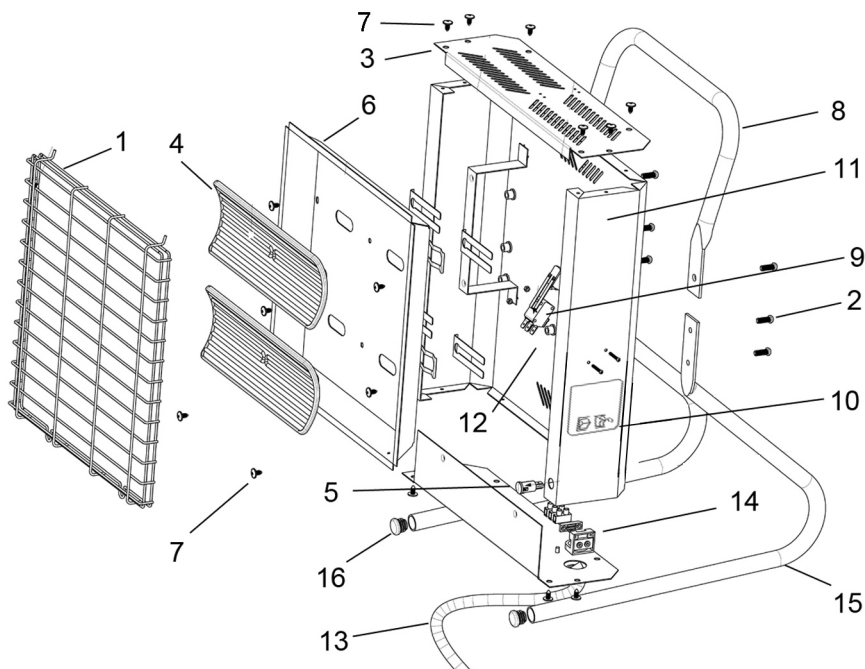
ELEMENT REPLACEMENT

Ceramic heating elements are long lasting and should not need replacing under normal circumstances. Should this become necessary take the heater to your CLARKE dealer.

FAULT FINDING

SYMPTOM	PROBLEM	SOLUTION
Heater does not operate, although plugged in and switched on.	Plug is loose/bad connection.	Remove the plug & check the connection of the plug and socket.
	Fuse blown.	Replace if necessary and investigate the cause. If the fuse blows repeatedly, consult your CLARKE dealer.
	No power at socket outlet.	Insert the plug into a suitable socket.
	Tilt safety switch is disabling the heater.	Ensure heater is upright. If the switch does not re-set, consult your CLARKE dealer.
Heater does not respond to remote controller	Batteries defective.	Replace batteries.
	Controller is out of range or not pointing at the display panel.	Move closer or try different angles of pointing the controller at the heater.
	Controller is damaged	Consult your CLARKE dealer.

COMPONENT PARTS



No	Description
1	Front Guard
2	M6x15 Pan Head Screw
3	Top Panel
4	Ceramic Heat Element
5	Neon Indicator Lamp
6	Reflector Panel
7	No10 x12 Pan Head Screw
8	Handle

No	Description
9	Tip-Over Switch
10	Switch Assembly
11	Casing
12	Screw
13	Power Cable & Plug
14	Cable Clamp
15	Leg
16	End Plug
n/a	Remote Control Unit

A selection of suitable extension leads & plugs is available from your nearest CLARKE dealer, for further information, contact your nearest dealer, or telephone CLARKE International Sales department on 01992 565300.

DECLARATIONS OF CONFORMITY



Hemnall Street, Epping, Essex CM16 4LG

DECLARATION OF CONFORMITY

This is an important document and should be retained.

We hereby declare that this product(s) complies with the following statutory requirement(s):

Electromagnetic Compatibility Regulations 2016

Electrical Equipment (Safety) Regulations 2016

The Restriction of the Use of Certain Hazardous Substances in Electrical and Electronic Equipment Regulations 2012

The Eco-design for Energy Related Products and Energy Information (Amendment) Regulation 2019

The following standards have been applied to the product(s):

EN IEC 55014-1:2021, EN IEC 55014-2:2021, EN IEC 61000-3-2:2019,

EN 61000-3-3:2013+A1:2019, EN 60335-2-30:2009+A11:2012+A1:2020, EN 62233:2008

EN 60335-1:2012+A11:2014+A13:2017+A1:2019+A14:2019+A2:2019, IEC 62321-4:2013+AMD1:2017,

IEC 62321-5:2013, IEC 62321-6:2015, IEC 62321-7-1:2015, IEC 62321-7-2:2017, IEC 62321-8:2017,

The technical documentation required to demonstrate that the product(s) meet(s) the requirement(s) of the aforementioned legislation has been compiled and is available for inspection by the relevant enforcement authorities.

The UKCA mark was first applied in: 2022

Product Description: 2.4kW Electric Ceramic Heater
Model number(s): DEVIL 350C (230V) DEVIL 351C (110V)
Serial / batch Number: N/A
Date of Issue: 15/07/2022

Signed:

J.A. Clarke
Director

DECLARATIONS OF CONFORMITY



Clarke[®]
INTERNATIONAL

Fitzwilliam Hall, Fitzwilliam Place, Dublin 2

DECLARATION OF CONFORMITY

This is an important document and should be retained.

We hereby declare that this product(s) complies with the following directive(s):

- 2014/30/EU *Electromagnetic Compatibility Directive*
- 2014/35/EU *Low Voltage Equipment Directive*
- 2011/65/EU *Restriction of the Use of Hazardous Substances in Electrical and Electronic Equipment Directive*
- 2009/125/EC *Eco-Design Directive (EU 2015/1188)*

The following standards have been applied to the product(s):

- EN IEC 55014-1:2021, EN IEC 55014-2:2021, EN IEC 61000-3-2:2019,
- EN 61000-3-3:2013+A1:2019, EN 60335-2-30:2009+A11:2012+A1:2020, EN 62233:2008
- EN 60335-1:2012+A11:2014+A13:2017+A1:2019+A14:2019+A2:2019, IEC 62321-4:2013+AMD1:2017,
- IEC 62321-5:2013, IEC 62321-6:2015, IEC 62321-7-1:2015, IEC 62321-7-2:2017, IEC 62321-8:2017

The technical documentation required to demonstrate that the product(s) meet(s) the requirement(s) of the aforementioned directive(s) has been compiled and is available for inspection by the relevant enforcement authorities.

The CE mark was first applied in: 2022

Product Description: 2.4kW Electric Ceramic Heater
Model number(s): DEVIL 350C (230V) DEVIL 351C (110V)
Serial / batch Number: N/A
Date of Issue: 15/07/2022

Signed:

J.A. Clarke
Director

A SELECTION FROM THE VAST RANGE OF

Clarke®

QUALITY PRODUCTS



AIR COMPRESSORS

From DIY to industrial, Plus air tools, spray guns and accessories.

GENERATORS

Prime duty or emergency standby for business, home and leisure.

POWER WASHERS

Hot and cold, electric and engine driven - we have what you need

WELDERS

Mig, Arc, Tig and Spot. From DIY to auto/industrial.

METALWORKING

Drills, grinders and saws for DIY and professional use.

WOODWORKING

Saws, sanders, lathes, mortisers and dust extraction.

HYDRAULICS

Cranes, body repair kits, transmission jacks for all types of workshop use.

WATER PUMPS

Submersible, electric and engine driven for DIY, agriculture and industry.

POWER TOOLS

Angle grinders, cordless drill sets, saws and sanders.

STARTERS/CHARGERS

All sizes for car and commercial use.



PARTS & SERVICE: 0208 988 7400

Parts Enquiries
Parts@clarkeinternational.com

Servicing & Technical Enquiries
Service@clarkeinternational.com

SALES: UK 01992 565333 or Export 00 44 (0)1992 565335

Clarke INTERNATIONAL Hemnall Street, Epping, Essex CM16 4LG
www.clarkeinternational.com