

Clanke[®]

air



1/2" REVERSIBLE RATCHET

MODEL No: CAT105

Part No: 3110861

OPERATION & MAINTENANCE
INSTRUCTIONS



SPECIFICATIONS

Min. Hose Size (ID)	1/4" BSP
Drive Size	1/2" Square
Ave. Air Consumption	6 cfm
Air Pressure Max	6.2 bar (90psi)
Maximum Speed	150 rpm
Maximum Torque	45 ft/lb (61Nm)
Noise Level	89.6 dB A
Weight	2.7 kg
Vibration	9.1 m/s ²
Dimensions LxWxH	344 x 214 x 48 mm
Part No	3110861

Please note that the details and specifications contained herein, are correct at the time of going to print. However CLARKE International reserve the right to change specifications at any time without prior notice. Always consult the machine's data plate

GUARANTEE

This CLARKE product is guaranteed against faulty manufacture for a period of 12 months from the date of purchase. Please keep your receipt as proof of purchase.

This guarantee is invalid if the product is found to have been abused or tampered with in any way, or not used for the purpose for which it was intended.

Faulty goods should be returned to their place of purchase, no product can be returned to us without prior permission.

This guarantee does not effect your statutory rights.

IN THE BOX

1 x 1 x Air Ratchet Handle	1 x 9mm Socket
1 x 19 mm Socket	1 x Extension Bar 1/2" Drive
1 x 17 mm Socket	1 x Extension Bar 6 mm Hex Drive
1 x 14 mm Socket	1 x Universal Joint 1/2" Drive
1 x 13 mm Socket	3 x 6 mm Hex Screwdriver Bits
1 x 11 mm Socket	(2 x Phillips (size 2 & 3)),
1 x 10 mm Socket	(1 x Slot End (size 5.5))

SAFETY PRECAUTIONS

IMPORTANT

*FAILURE TO FOLLOW THESE PRECAUTIONS COULD RESULT IN PERSONAL INJURY,
AND/OR DAMAGE TO PROPERTY.*

WORK ENVIRONMENT

- Keep the work area clean and tidy.
- Dress appropriately - Do not wear loose clothing or jewellery. Tie long hair out of the way.
- Keep children and visitors away - Do not let children handle the ratchet. Make sure that any other persons in the work area are dressed suitably and are wearing eye and ear protectors.
- Do not operate the ratchet where there are flammable liquids or gases.
- Keep the air supply hose away from heat, oil and sharp edges.
- Do not fit the ratchet to any stand or clamping device that may damage the tool.

USE

- Stay alert and use common sense - Do not operate the ratchet when you are tired or under the influence of alcohol, drugs or medication.
- Always wear eye protectors when using the ratchet- Eye protectors must provide protection from flying particles from the front and the side.
- Always wear ear protectors when using the ratchet.
- Do not overreach - Keep proper footing and balance at all times.
- Never use any type of bottled gas as a source of power for the ratchet.
- Do not connect the air supply hose with your finger on the trigger of the ratchet.
- Do not exceed the maximum pressure for the ratchet: 90 psi / 6.2 bar.
- Check hoses for leaks or worn condition before use, and ensure that all connections are secure.
- Do not use the ratchet for any other purpose than that described in this book.
- Do not carry out any alterations or modifications to the ratchet.

SAFETY PRECAUTIONS

- Always disconnect from the air supply when:
 - a) Performing any maintenance
 - b) The ratchet is not in use.
 - c) The ratchet will be left unattended.
 - d) Moving to another work area.
 - e) Passing the ratchet to another person.
- Never use the ratchet if it is defective or operating abnormally.
- The ratchet should be serviced at regular intervals by qualified service personnel.
- Avoid damaging the ratchet for example by applying excessive force of any kind.
- ALWAYS maintain the tool with care. Keep it clean for best and safest performance.
- Quick change couplings should not be located at the tool. They add weight and could fail due to vibration.
- DO NOT force or misuse the tool. It will do a better and safer job at the rate for which it was designed.
- DO NOT remove any labels. Damaged labels should be replaced.
- This tool vibrates with use. Vibration may be harmful to your hands or arms. Stop using the tool if discomfort, a tingling sensation or pain occurs. Seek medical advice before resuming use.

TRANSPORTATION

- Never carry the ratchet by the air supply hose.
- Never carry the ratchet with your finger on the trigger.

STORAGE

- When not in use the ratchet must be disconnected from the air supply and stored in a dry place out of the reach of children (preferably in a locked cabinet).
- Avoid storing the ratchet in environments where the temperature is below 0°C.

PARTS



AIR SUPPLY

WARNING!

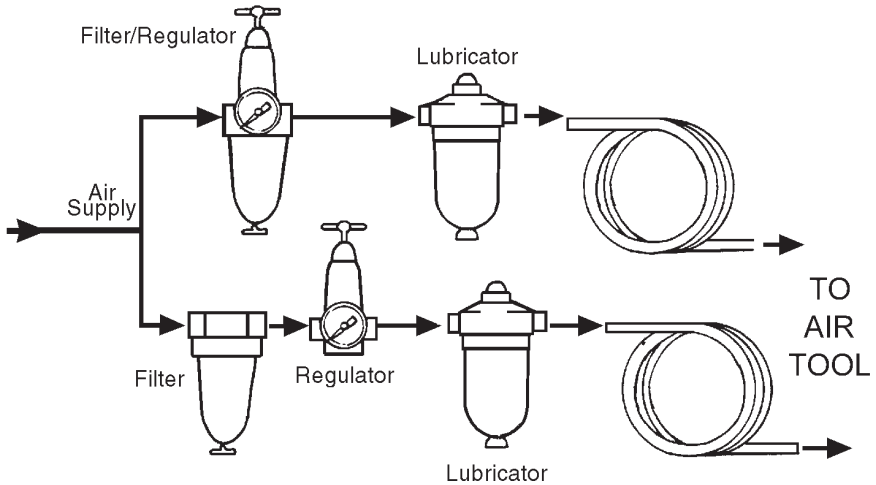
COMPRESSED AIR CAN BE DANGEROUS. ENSURE THAT YOU ARE THOROUGHLY FAMILIAR WITH ALL PRECAUTIONS RELATING TO THE USE OF COMPRESSORS AND COMPRESSED AIR SUPPLY.

- Use only clean, dry, regulated compressed air as a power source for the ratchet.
- Air compressors used with the ratchet must comply with the appropriate European Community safety directives.
- A build up of moisture or oil in the air compressor will accelerate wear and corrosion in the ratchet.
- Never exceed the maximum operating pressure for the ratchet.

AIR HOSE

- The air hose must be rated at least 150% of the maximum operating pressure of the tool.

RECOMMENDED AIR SUPPLY CONNECTION



ASSEMBLY

NOTE: Ensure the airline is turned off.

Connect a suitable hose to the tool using a $\frac{1}{4}$ " hose adapter, (A whip hose with Quick Fit coupling is available from your CLARKE dealer) then connect the other end to the airline.

Your Ratchet is now ready for use.



WARNING

COMPRESSED AIR CAN BE DANGEROUS. ENSURE THAT YOU ARE THOROUGHLY FAMILIAR WITH ALL PRECAUTIONS RELATING TO THE USE OF COMPRESSORS AND COMPRESSED AIR SUPPLY.

OPERATING INSTRUCTIONS

FITTING THE SOCKETS

- 1 Select the impact socket you require.
- 2 Push the impact socket onto the anvil as shown.



SELECT DIRECTION

- 1 Rotate the direction selector anticlockwise to select forward.
- 2 Rotate the direction selector clockwise to select reverse.



USING THE RACHET

For removal

1. Set direction of rotation to reverse.
2. Fit the correct socket etc to fit fastener.
3. Place the ratchet on the fastener and break loose by hand. then press the trigger. The ratchet will complete the job.
4. Use penetrating oil for rusted fasteners if necessary.

For tightening

1. Hand tighten the fixing as much as possible.
2. Set direction of rotation to forward.
3. Fit the correct socket etc to fit fastener.
4. Place the ratchet on the fastener and press the trigger.
5. Final tightening is completed by hand.



OPERATING INSTRUCTIONS

DISCONNECTING THE AIR SUPPLY

Do not disconnect the air supply hose until the compressor has been shut down and the compressed air released.

1. Refer to the compressor instruction book for the procedures to shut down and release the compressed air.
2. Once the pressure has been released, disconnect the air supply hose from the ratchet.
3. Store the ratchet safely in its box in a dry, secure environment.

MAINTENANCE

WARNING! Make sure that the ratchet is disconnected from the air supply before starting any cleaning, or maintenance procedures.

DAILY BEFORE USE.

1. Drain water from air tank, air line and compressor.
2. Check and clean the air inlet gauze filter if necessary.
3. Pour a few drops of CLARKE Air Line Oil, into the air inlet. This should be carried out regardless of whether or not an air line lubricator is used. If an Air line lubricator is not used, this procedure should be repeated after every two to three hours of use.

CLEANING

- Keep the body of the ratchet clean and free from debris, Grit or gum deposits in the tool may reduce efficiency.

SERVICE AND REPAIR

- All servicing and repair must be carried out by qualified service technicians.

NOTES

Be aware that factors other than the tool may effect its operation and efficiency such as reduced compressor output, excessive drain on the airline, moisture or restrictions in the line, or the use of connectors of improper size or poor condition which will reduce air supply.

**Clarke Air Line Oil is available from your CLARKE dealer part no. 3050825.

DECLARATION OF CONFORMITY

We declare that these products comply to the following standards/directives

- 98/37/EC

Model No: **CAT105**

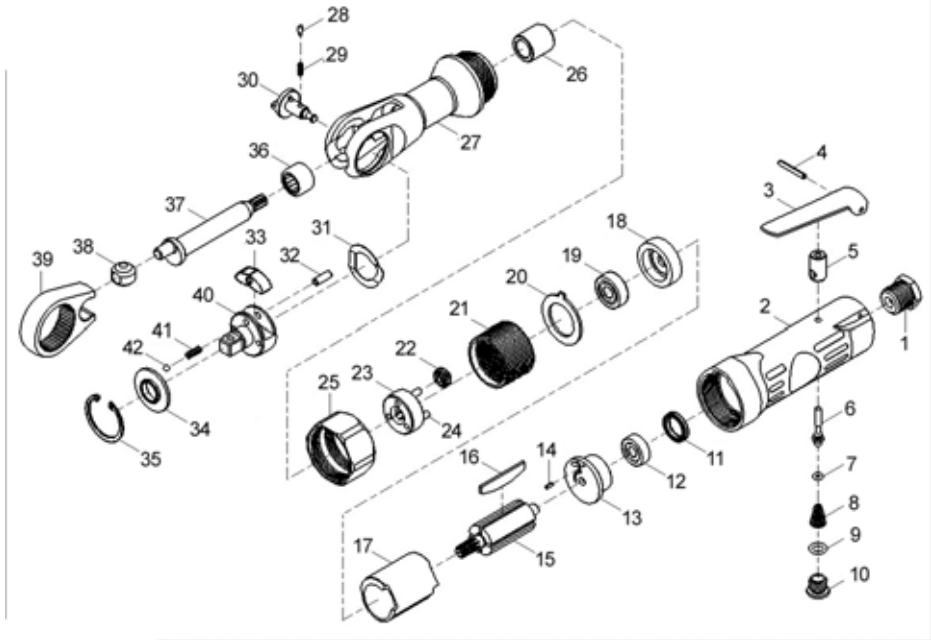
Serial or Batch number: **See product data plate**

signature:



D. Kemp
ENGINEERING MANAGER

PARTS DIAGRAM



No.	Part No.	Description	No.	Part No.	Description
1	KL104018	Inlet Bushing	23	KL106323	Gear Plate
2	KL106302	Handle	24	KL103324	Pin
3	KL103127	Throttle Lever	25	KL106324	Clamp Housing
4	KLP0030220	Pin	26	KL106325	Bushing
5	KL106305	Bushing	27	KL106326	Ratchet
6	KL106306	Valve	28	KL106327	Pin Lock
7	KLO0300180	O-Ring	29	KL106328	Spring
8	KL106308	Spring	30	KL106329	Button Reverse
9	KLO0700200	O-Ring	31	KL106330	Washer
10	KL106310	Plug	32	KL106331	Pin
11	KL106311	Bearing Cap	33	KL106332	Pawl
12	KLO607ZZ0A	Ball Bearing	34	KL106435	1 / 2" Washer
13	KL106313	Rear End Plate	35	KLRR315	Retaining Ring
14	KLP0020060	Pin	36	KL1212HK0	Bearing
15	KL106315	Rotor	37	KL106338	Shaft Crank
16	KL106316	Rotor Blade	38	KL106339	Bushing Drive
17	KL106317	Cylinder	39	KL106340	Yoke
18	KL106318	Front End Plate	40	KL106441	1 / 2" Anvil
19	KLO608ZZ0A	Ball Bearing	41	KL106342	Spring
20	KL106320	Washer	42	KL106343	Steel Ball
21	KL106321	Spindle			
22	KL106322	Gear			

A SELECTION FROM THE VAST RANGE OF

Clarke®

QUALITY PRODUCTS

AIR COMPRESSORS

From DIY to industrial. Plus air tools, spray guns and accessories.

GENERATORS

Prime duty or emergency standby for business, home and leisure.

POWER WASHERS

Hot and cold, electric and engine driven - we have what you need.

WELDERS

Mig, Arc, Tig and Spot. From DIY to auto/industrial.

METALWORKING

Drills, grinders and saws for DIY and professional use.

WOODWORKING

Saws, sanders, lathes, mortises and dust extraction.

HYDRAULICS

Cranes, body repair kits, transmission jacks for all types of workshop use.

WATER PUMPS

Submersible, electric and engine driven for DIY, agriculture and industry.

POWER TOOLS

Angle grinders, cordless drill sets, saws and sanders.

STARTER/CHARGERS

All sizes for car & commercial use.



Clarke INTERNATIONAL

For spare parts and servicing, please contact your nearest dealer, or Clarke International on

020 - 8988 - 7400

e-mail: Parts@clarkeinternational.com e-mail: Service@clarkeinternational.com

Hemnal Street, Epping, Essex CM16 4LG